

APP CRS	Rwy Ldg	5498
209°	TDZE	948
	Apt Elev	948

RNAV (GPS) Y RWY 21

GEORGETOWN-SCOTT COUNTY RGNL (27K)

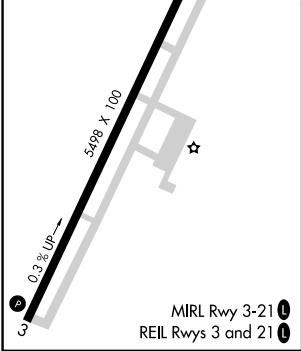
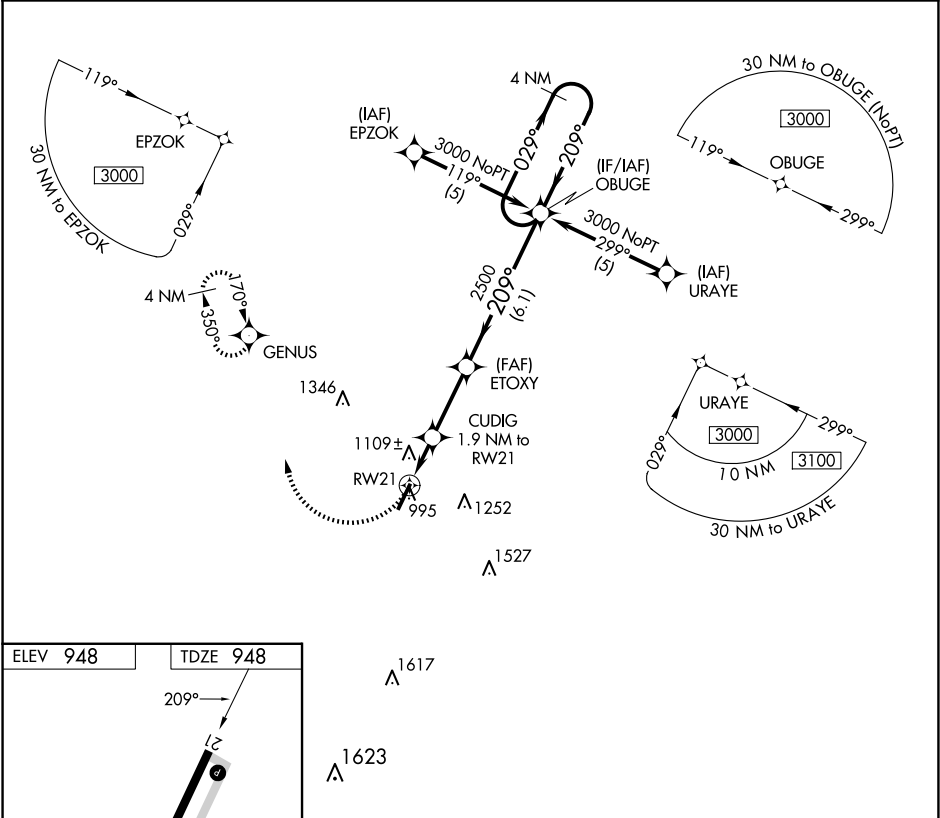
⚠

NA

DME/DME RNP-0.3 NA. VDP NA with Lexington altimeter setting. When local altimeter setting not received, use Lexington altimeter setting and increase all MDAs 40 feet, increase LNAV Cats C/D and Circling Cat D visibility ¼ SM.

MISSED APPROACH: Climbing right turn to 3000 direct GENUS and hold.

AWOS-3	LEXINGTON APP CON		CLNC DEL	UNICOM
119.975	120.15	259.3 (040° - 220°)	120.75 298.9 (221° - 039°)	123.0 (CTAF) 0



3000	GENUS	4 NM Holding Pattern			
CUDIG 1.9 NM to RW21		ETOXY	OBUGE	3000	
1.2 NM to RW21		3.04° TCH 30	209°	209°	
RW21		1580	2500	3000	
1.2 NM		0.7 NM	2.8 NM	6.1 NM	
CATEGORY	A	B	C	D	
LNAV MDA	1360-1	412 (500-1)	1360-1¼	412 (500-1¼)	
CIRCLING	1420-1	472 (500-1)	1560-1¾ 612 (700-1¾)	1660-2¼ 712 (800-2¼)	

SE-1, 07 AUG 2025 to 04 SEP 2025

SE-1, 07 AUG 2025 to 04 SEP 2025