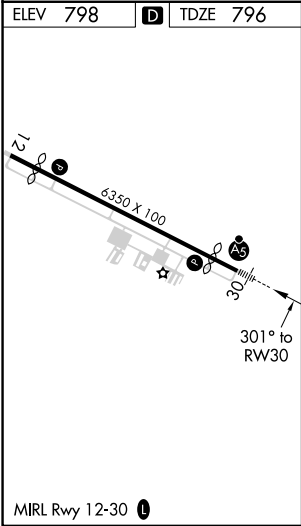
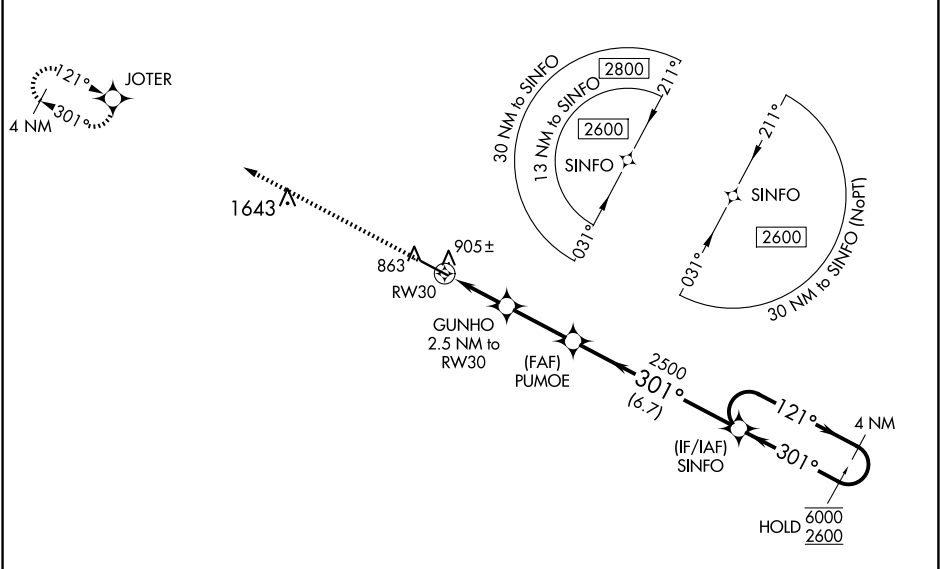


WAAS CH <b>58215</b> <b>W30A</b>	APP CRS <b>301°</b>	Rwy ldg TDZE Apt Elev	<b>4962</b> <b>796</b> <b>798</b>
--	------------------------	-----------------------------	---

RNAV (GPS) RWY 30

THOMASTON-UPSON COUNTY (OPN)

RNP APCH-GPS. <div><div></div><div>For uncompensated Baro-VNAV systems, LNAV/VNAV NA below -16°C or above 54°C. For inop ALS, increase LNAV/VNAV all Cats visibility to ¾ SM and LNAV Cat C/D visibility to 1 SM.</div></div>		MALSR <div><div></div></div>	MISSED APPROACH: Climb to 2800 direct JOTER and hold.
AWOS-3 <b>133.975</b>	ATLANTA APP CON ★ <b>124.2 279.6</b>	UNICOM <b>122.8 (CTAF) 0</b>	



2800

JOTER

VGSI and RNAV glidepath not coincident  
(VGSI Angle 3.00/TCH 27).

SINFO

4 NM Holding Pattern

1.1 NM to RW30

2.5 NM to RW30

1.1 NM

1.4 NM

2.7 NM

6.7 NM

GUNHO

PUMOE

2500

2500

1640

2500

121°

301°

6000

2600

GP 3.00°

TCH 50

CATEGORY	A		B	C	D
LPV DA			996-½	200 (200-½)	
LNAV/VNAV DA			1086-½	290 (300-½)	
LNAV MDA	1160-½	364 (400-½)		1160-⅝	364 (400-⅝)
CIRCLING	1220-1 422 (500-1)	1260-1 462 (500-1)	1260-1½ 462 (500-1½)	1680-3 882 (900-3)	