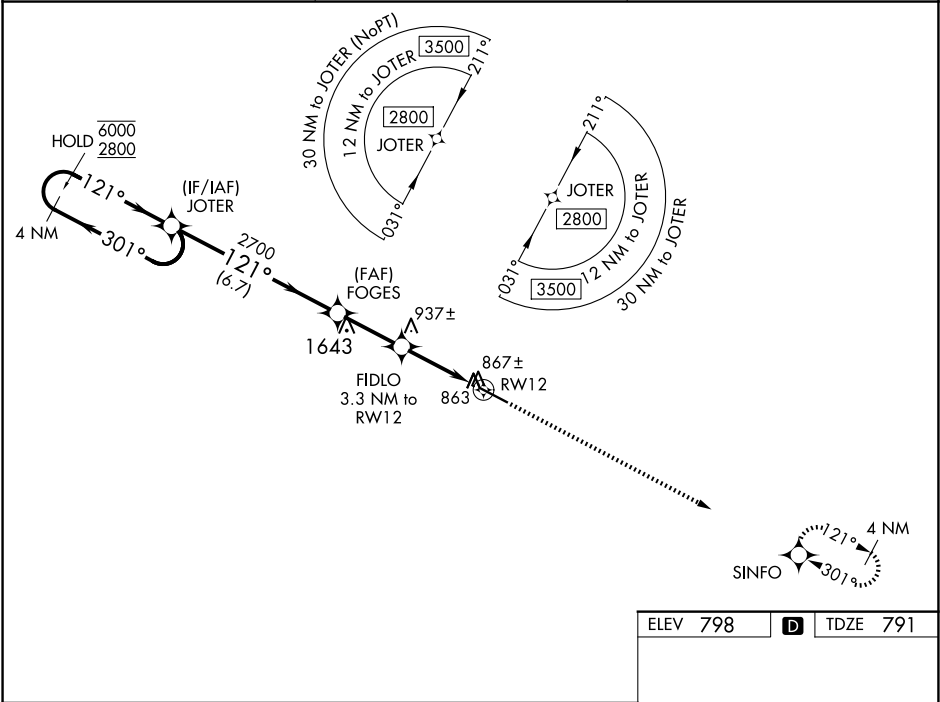


WAAS CH 63115 W12A	APP CRS 121°	Rwy Idg TDZE 791 Apt Elev 798
--	------------------------	---

RNAV (GPS) RWY 12

THOMASTON-UPSON COUNTY (OPN)

RNP APCH-GPS. <div><div>T</div><div>Rwy 12 helicopter visibility reduction below ¾ SM NA. For uncompensated Baro-VNAV systems, LNAV/VNAV NA below -16°C or above 54°C.</div></div>		MISSED APPROACH: Climb to 2600 direct SINFO and hold.
AWOS-3 133.975	ATLANTA APP CON ★ 124.2 279.6	UNICOM 122.8 (CTAF) 0



4 NM Holding Pattern		VGSi and RNAV glidepath not coincident (VGSi Angle 3.50/TCH 32).		2600	SINFO
6000 ← 301° 2800 121° →		FOGES 2700		121° to RWY 12	
GP 3.00° TCH 40		FIDLO 1860		6350 X 100	
6.7 NM		2.6 NM		0.8 NM to RWY 12	
CATEGORY		A		B	
LPV DA		1041-¾		250 (300-¾)	
LNAV/VNAV MDA		1041-¾		250 (300-¾)	
LNAV MDA		1120-1		329 (400-1)	
CIRCLING		1220-1 422 (500-1)	1260-1 462 (500-1)	1260-1½ 462 (500-1½)	1680-3 882 (900-3)
THOMASTON, GEORGIA		THOMASTON-UPSON COUNTY (OPN)		MIRL Rwy 12-30 0	