

WAAS CH 70512 W36A	APP CRS 357°	Rwy Idg TDZE 891 Apt Elev 910
--	------------------------	---

RNAV (GPS) RWY 36

ANKENY RGNL (IKV)

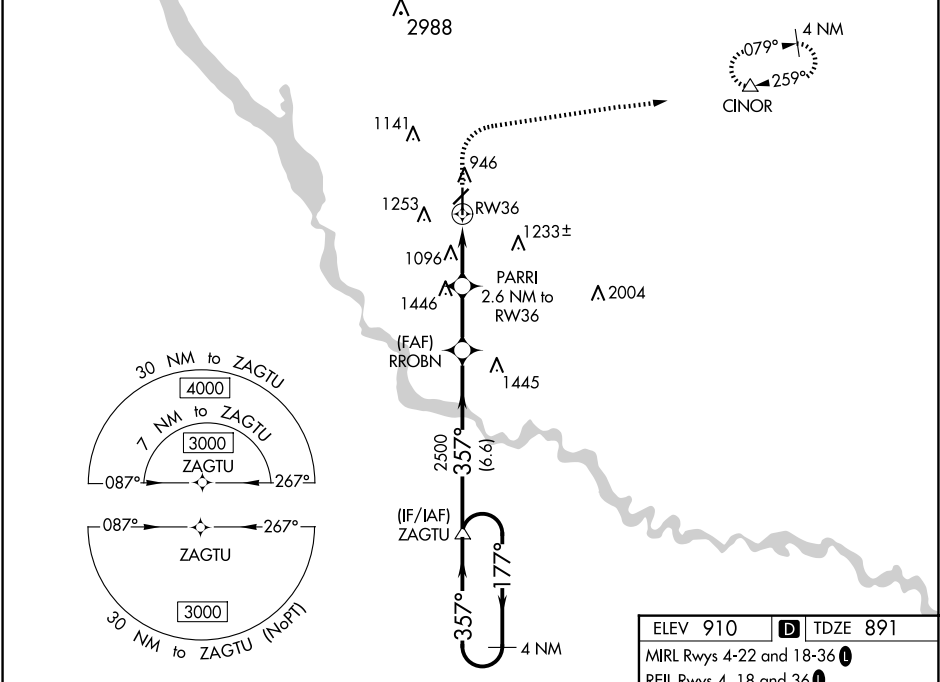
▼

▲

For uncompensated Baro-VNAV systems,
LNAV/VNAV NA below -20°C (-4°F) or above 54°C (130°F).
Circling Rwy 22 NA at night. DME/DME RNP-0.3 NA.

MISSED APPROACH: Climb to 1500
then climbing right turn to 4000 direct
CINOR and hold, continue
climb-in-hold to 4000.

AWOS-3 119.175	DES MOINES APP CON 123.9 307.15	CLNC DEL 126.65	UNICOM 122.9 (CTAF)
--------------------------	---	---------------------------	-------------------------------



		ELEV 910		TDZE 891	
		MIRL Rwy 4-22 and 18-36			
		REIL Rwy 4, 18 and 36			
		REIL Rwy 22			
		1500		4000	
		CINOR			
		ZAGTU		RROBN	
		3000		2500	
		GP 3.00°		TCH 52	
		177°		357°	
		6.6 NM		2.3 NM	
		PARRI		2.6 NM to RW36	
		*1.3 NM to RW36		RW36	
		*1760		*LNAV only	
CATEGORY		A	B	C	D
LPV DA		1091-3/4		200 (200-3/4)	
LNAV/VNAV DA		1405-1 3/4		514 (500-1 3/4)	
LNAV MDA		1360-1	469 (500-1)	1360-1 3/8	469 (500-1 3/8)
CIRCLING		1560-1	650 (700-1)	1560-1 3/4	1760-2 3/4
				650 (700-1 3/4)	850 (900-2 3/4)