

WAAS

CH 56499

W20A

APP CRS

196°

Rwy Idg

6350

TDZE

699

Apt Elev

704

RNAV (GPS) RWY 20

CONCORD-PADGETT RGNL (JQF)

RNP APCH-GPS.

▼

▲

For uncompensated Baro-VNAV systems, LNAV/VNAV NA below -1.6°C or above 54°C. For inop ALS, increase LNAV/VNAV visibility all Cats to 1½ SM. Rwy 20 helicopter visibility reduction below ¾ SM NA.

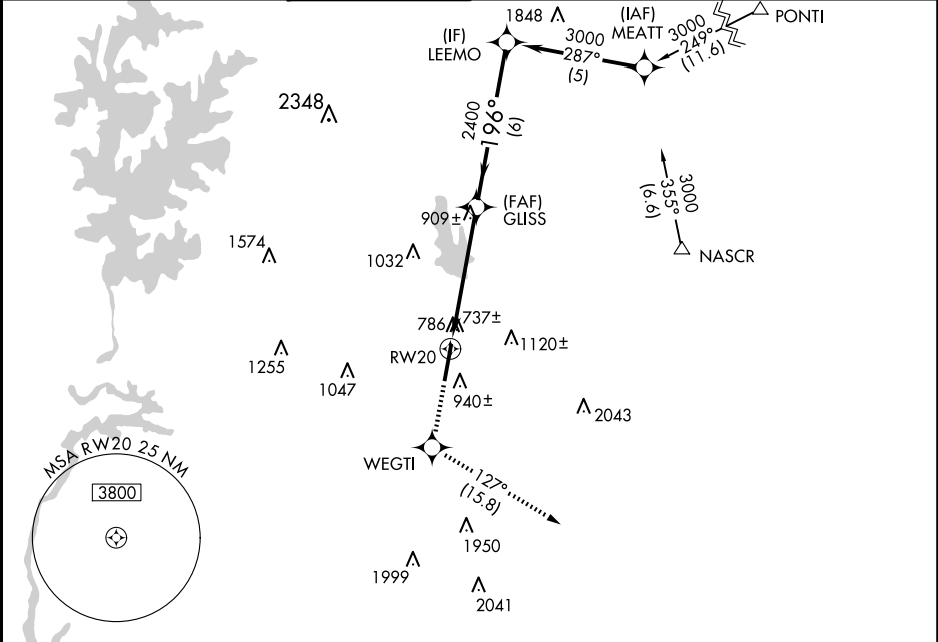
MALSR

▲

AS

MISSED APPROACH: Climb to 3000 direct WEGTI and on track 127° to LOCAS and hold.

ATIS 133.675	CHARLOTTE APP CON 128.325 307.8	CONCORD TOWER ★ 134.65 (CTAF) 0	GND CON 121.85	CLNC DEL 118.55	CLNC DEL 127.25 (when twr closed)	UNICOM 122.95
-----------------	------------------------------------	------------------------------------	-------------------	--------------------	---	------------------



ELEV 704

D

TDZE 699

3000

WEGTI

LOCAS

tr 127°

GLISS

LEEMO

3000

GP 3.00°

TCH 44

\*LNAV only.

RW20

1.8 NM to RW20

2400

2400

196°

1.8 NM

3.3 NM

6 NM

CATEGORY	A	B	C	D
LPV DA	1026-¾	327 (400-¾)		
LNAV/VNAV DA	1222-1¼	523 (600-1¼)		
LNAV MDA	1300-¾	601 (600-¾)	1300-1¾	601 (600-1¾)
CIRCLING	1300-1	596 (600-1)	1480-2¼ 776 (800-2¼)	1480-2½ 776 (800-2½)