

CHARLOTTE DEP CON
128.325 307.8
ATIS
133.675
CLNC DEL
118.55
CLNC DEL (when twr closed)
127.25
GND CON
121.85
CONCORD TOWER ★
134.65 (CTAF)
UNICOM
122.95

RNAV 1 - DME/DME/IRU or GPS. 2200
RADAR required.

TOP ALTITUDE:
3000

TAKEOFF MINIMUMS
Rwy 2: Standard.
Rwy 20: Standard with minimum
climb of 320' per NM to 2400.

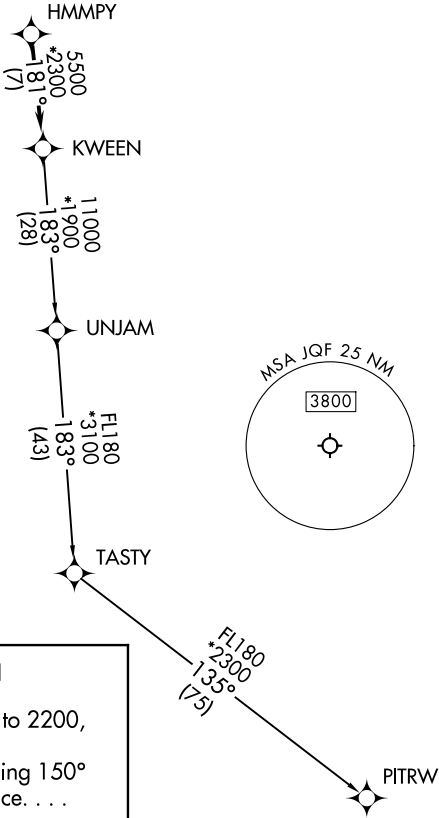
- NOTE: For turbo jets only.
NOTE: Transponder code will be issued via PDC
or Charlotte CLNC DEL.
NOTE: If unable to accept climb rates,
advise ATC on initial contact.
NOTE: Upon reaching 10000 MSL, accelerate to
and maintain 280K, if unable advise ATC.

NOTE: Chart not to scale.

DEPARTURE ROUTE DESCRIPTION

TAKEOFF RUNWAY 2: Climb on heading 016° to 2200,
then on heading assigned by ATC, thence. . . .
TAKEOFF RUNWAY 20: Climbing left turn heading 150°
to 2400, then on heading assigned by ATC, thence. . . .
. . . .on RADAR vectors to HMMPY, then on track 181° to
KWEEN. Then on assigned transition. Maintain 3000, expect
filed altitude within 10 minutes after departure.

PITRW TRANSITION (KWEEN5.PITRW)
UNJAM TRANSITION (KWEEN5.UNJAM)



SE-2, 07 AUG 2025 to 04 SEP 2025

SE-2, 07 AUG 2025 to 04 SEP 2025