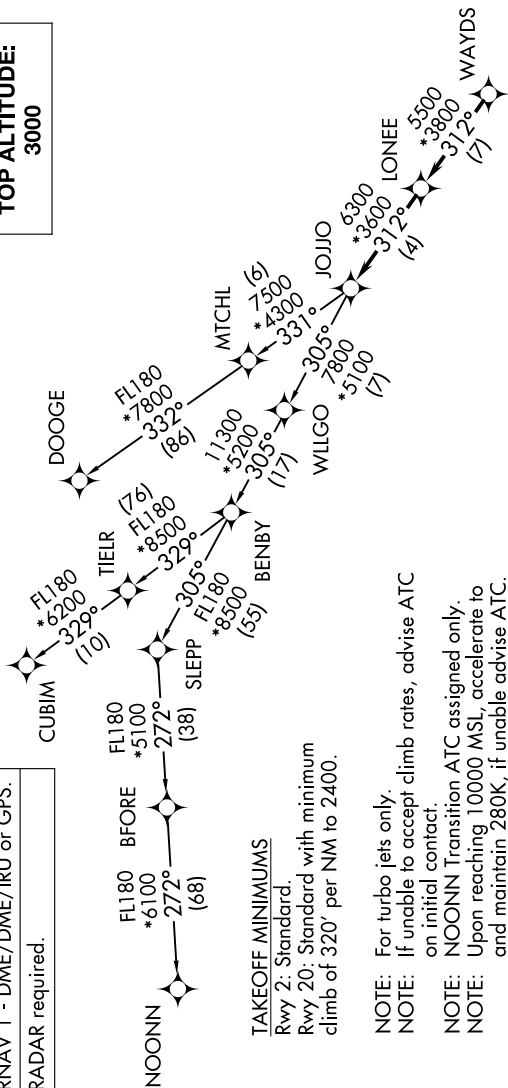


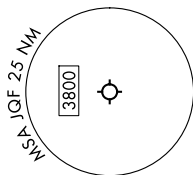
JOJJO FIVE DEPARTURE (RNAV)

CHARLOTTE DEP CON	128.325	307.8	ATIS
			133.675
			CINCL DEL
			118.55
			CINCL DEL (when twr closed)
			127.25
			GND CON
			121.85
			CONCORD TOWER**
			134.65 (CTAF)
			UNICOM
			122.95

TOP ALTITUDE:
3000



z



NOTE: Chart not to scale.

DEPARTURE	ROUTE	DESCRIPTION
1	1	1
2	2	2
3	3	3
4	4	4
5	5	5
6	6	6
7	7	7
8	8	8
9	9	9
10	10	10
11	11	11
12	12	12
13	13	13
14	14	14
15	15	15
16	16	16
17	17	17
18	18	18
19	19	19
20	20	20
21	21	21
22	22	22
23	23	23
24	24	24
25	25	25
26	26	26
27	27	27
28	28	28
29	29	29
30	30	30
31	31	31
32	32	32
33	33	33
34	34	34
35	35	35
36	36	36
37	37	37
38	38	38
39	39	39
40	40	40
41	41	41
42	42	42
43	43	43
44	44	44
45	45	45
46	46	46
47	47	47
48	48	48
49	49	49
50	50	50
51	51	51
52	52	52
53	53	53
54	54	54
55	55	55
56	56	56
57	57	57
58	58	58
59	59	59
60	60	60
61	61	61
62	62	62
63	63	63
64	64	64
65	65	65
66	66	66
67	67	67
68	68	68
69	69	69
70	70	70
71	71	71
72	72	72
73	73	73
74	74	74
75	75	75
76	76	76
77	77	77
78	78	78
79	79	79
80	80	80
81	81	81
82	82	82
83	83	83
84	84	84
85	85	85
86	86	86
87	87	87
88	88	88
89	89	89
90	90	90
91	91	91
92	92	92
93	93	93
94	94	94
95	95	95
96	96	96
97	97	97
98	98	98
99	99	99
100	100	100

TAKEOFF RUNWAY 2: Climb on heading 016° to 2200, then on heading assigned by ATC, thence. . . .

TAKEOFF RUNWAY 20: Climbing left turn heading 150° to 2400, then on heading assigned by ATC, thence. . . .

... on RADAR vectors to WAYDS, then on depicted route to JOJO.
Then on assigned transition. Maintain 3000, expect filed altitude within
10 minutes after departure.

CUBIM TRANSITION (JOJO5.CUBIM)
DOOGE TRANSITION (JOJO5.DOOGE)
NOONN TRANSITION (JOJO5.NOONN)

JOJJO FIVE DEPARTURE (RNAV)

(JOJJO5.JOJJO) 21MAR24

CONCORD, NORTH CAROLINA
CONCORD-PADGETT RGNL (JQF)