

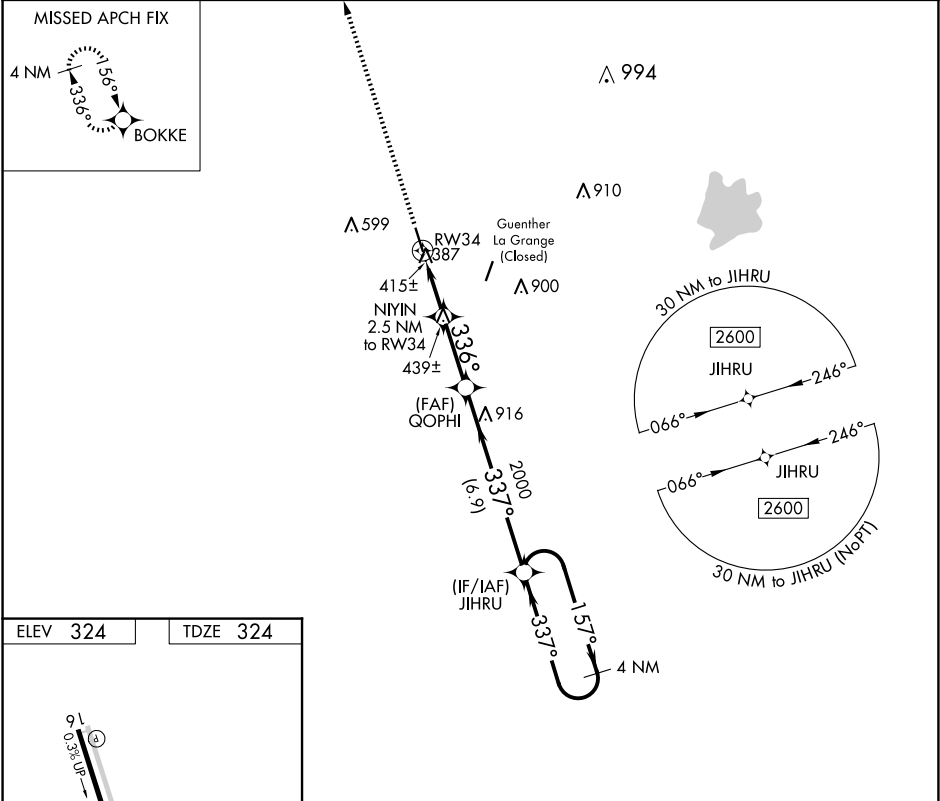
WAAS CH 86929 W34A	APP CRS 336°	Rwy Idg TDZE Apt Elev	5000 324 324
----------------------------------------	------------------------	-----------------------------	-----------------------------------------

RNAV (GPS) RWY 34

FAYETTE RGNL AIR CENTER (3T5)

RNP APCH.	MISSED APPROACH: Climb to 2600 direct BOKKE and hold.
When local altimeter setting not received, use Giddings-Lee altimeter setting and increase all MDA 60 feet, increase LP and LNAV Cat C visibility ¼ mile. Rwy 34 helicopter visibility reduction below ¾ SM NA.	

AWOS-3 124.175	AUSTIN APP CON 120.875 270.25	GCO 121.725	UNICOM 122.7 (CTAF) 0
--------------------------	-----------------------------------------	-----------------------	---------------------------------



2600

↑

BOKKE

✦

VGSI and descent angles not coincident

(VGSI angle 3.00/TCH 31).

4 NM

Holding Pattern

NIYIN

2.5 NM to RW34

≤3.00°

TCH 40

QOPHI

JIHRU

336°

337°

157°

2000

2600

2.5 NM

2.6 NM

6.9 NM

1160

CATEGORY	A	B	C	D
LP MDA	700-1 376 (400-1)			NA
LNAV MDA	740-1 416 (500-1)		740-1½ 416 (500-1½)	NA

REIL Rwy 16 and 34

MIRL Rwy 16-34

336°

SC-5, 07 AUG 2025 to 04 SEP 2025

SC-5, 07 AUG 2025 to 04 SEP 2025