

LA GRANGE, TEXAS

AL-9154 (FAA)

23166

WAAS CH 42928 W16A	APP CRS 156°	Rwy Idg 5000 TDZE 318 Apt Elev 324
--	------------------------	---

RNAV (GPS) RWY 16
FAYETTE RGNL AIR CENTER (3T5)

RNP APCH.

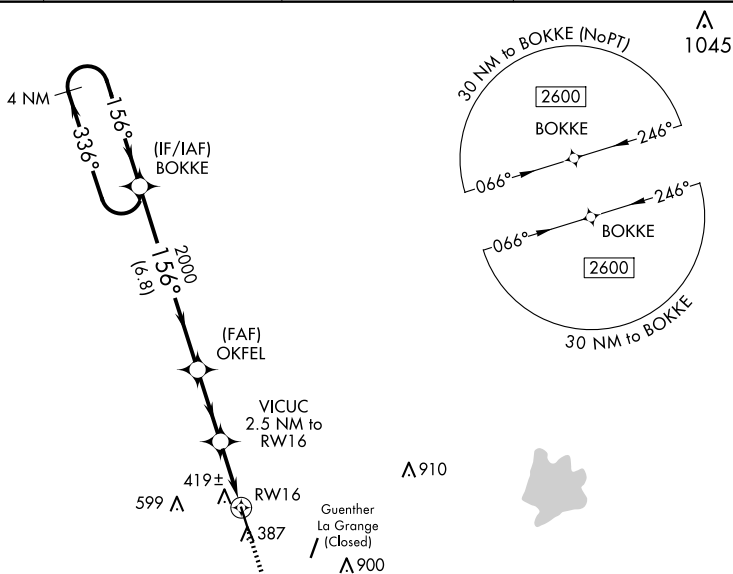
T When local altimeter setting not received, use Giddings-Lee altimeter setting
A and increase DA 59 feet, all MDA 60 feet, increase LNAV Cat C visibility
 ¼ mile. Rwy 16 helicopter visibility reduction below ¾ SM NA.

MISSED APPROACH: Climb to 2600
direct JIHRU and hold.

AWOS-3
124.175

AUSTIN APP CON
120.875 270.25

GCO
121.725

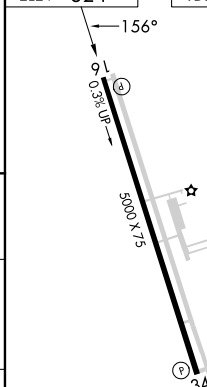
UNICOM
122.7 (CTAF) **L**

MISSED APCH FIX
JIHRU

[illegible]

CATEGORY	A	B	C	D
LPV DA	568-1 250 (300-1)			NA
LNAV MDA	680-1 362 (400-1)			NA

ELEV 324		TDZE 318
----------	--	----------



REIL Rwy 16 and 34
MIRL Rwy 16-34 **L**

LA GRANGE, TEXAS
Amdt 2C 07NOV19

29°54'N-96°57'W

FAYETTE RGNL AIR CENTER (3T5)
RNAV (GPS) RWY 16

SC-5, 07 AUG 2025 to 04 SEP 2025