

WAAS
CH **99608**
W21A

APP CRS
213°

Rwy Idg
TDZE
Apt Elev
1033
1033

RNAV (GPS) RWY 21

CLINTON FLD (I66)

RNP APCH.

▼

▲ NA

Baro-VNAV NA when using Wilmington Air Park altimeter setting. For uncompensated Baro-VNAV systems, LNAV/VNAV NA below -17°C or above 54°C. When local altimeter setting not received, use Wilmington Air Park altimeter setting and increase all DA/MDA 20 feet. Rwy 21 helicopter visibility reduction below ¾ SM NA.

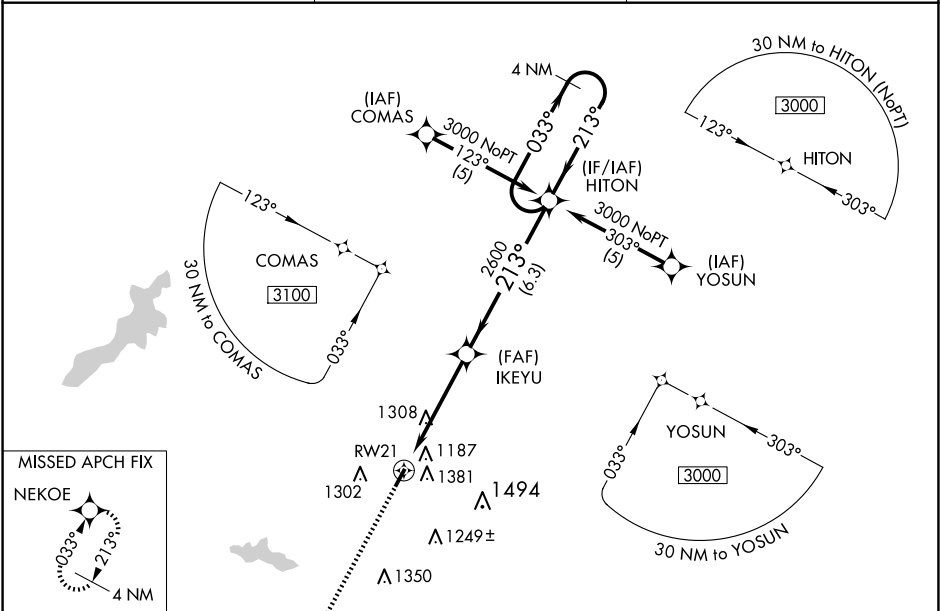
MISSED APPROACH:

Climb to 3000 direct NEKOE and hold.

AWOS-3
124.175

COLUMBUS APP CON
118.85 269.275

UNICOM
122.725 (CTAF) 1



ELEV 1033 TDZE 1033

213°

21

3579 x 60

3

MIRL Rwy 3-21 1

3000

NEKOE

VGSI and RNAV glidepath not coincident (VGSI Angle 3.75/TCH 20).

4 NM Holding Pattern

3000

HITON

033°

213°

3000

GP 3.00° TCH 40

4.7 NM

6.3 NM

CATEGORY	A	B	C	D
LPV DA	1491-1 ¾	458 (500-1 ¾)		NA
LNAV/VNAV DA	1589-2	556 (600-2)		NA
LNAV MDA	1640-1 607 (700-1)	1640-1 ¾ 607 (700-1 ¾)		NA
CIRCLING	1740-1 707 (800-1)	1740-2 707 (800-2)		NA