

VORTAC CVA

113.8

Chan 85

APP CRS

036°

Rwy Idg

TDZE

Apt Elev

N/A

N/A

616

VOR-A

TRI-TOWNSHIP (SFY)

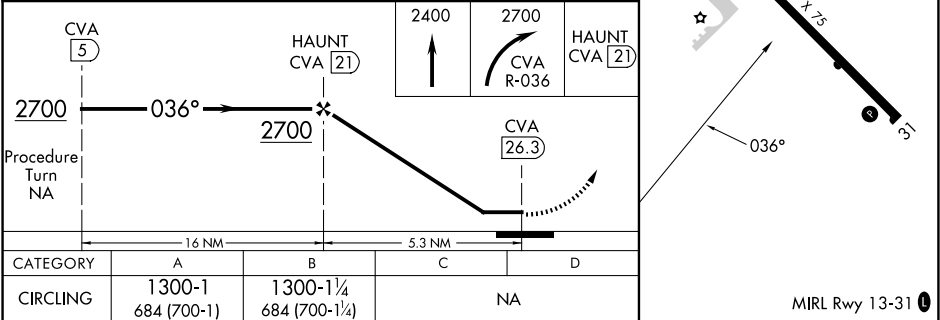
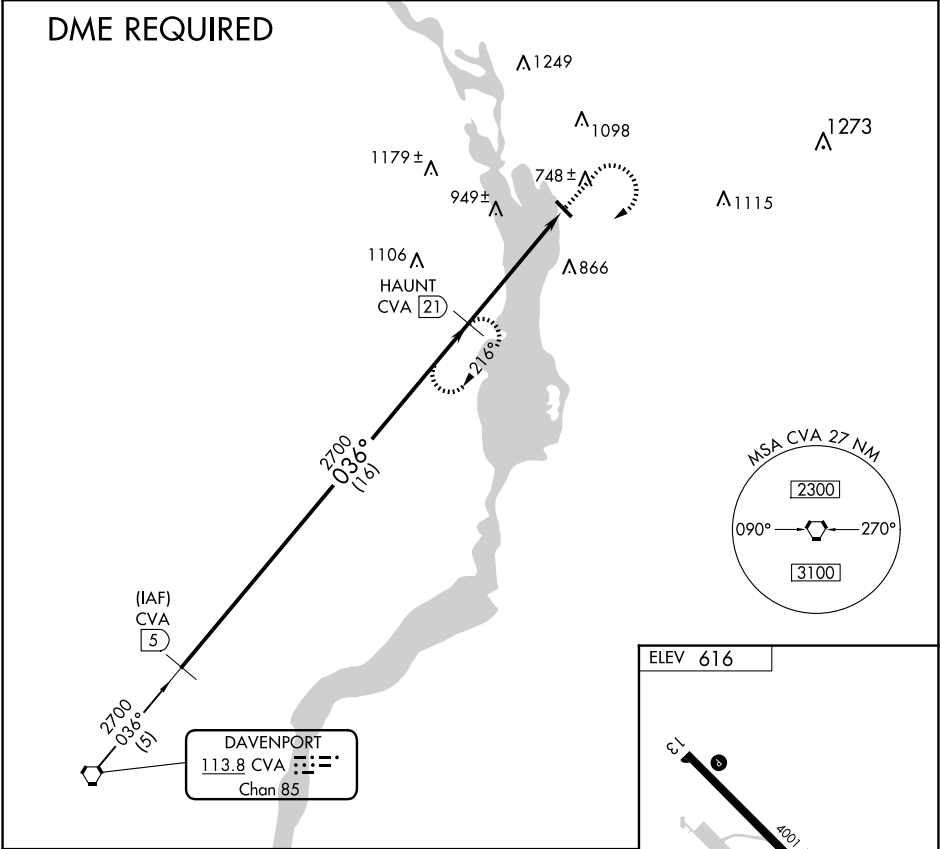
▼

NA

When local altimeter setting not received, use Sterling/Rockfalls altimeter setting and increase all MDA 80 feet. Procedure NA at night. Rwy 13, 31 helicopter visibility reduction below 1 SM NA. DME required.

MISSED APPROACH: Climb to 2400 then climbing right turn to 2700 on CVA VORTAC R-036 to HAUNT and hold.

AWOS-3PT 118.650	QUAD CITY APP CON★ 125.95 257.8	UNICOM 122.7 (CTAF) 0
---------------------	------------------------------------	--------------------------



EC-3, 07 AUG 2025 to 04 SEP 2025

EC-3, 07 AUG 2025 to 04 SEP 2025