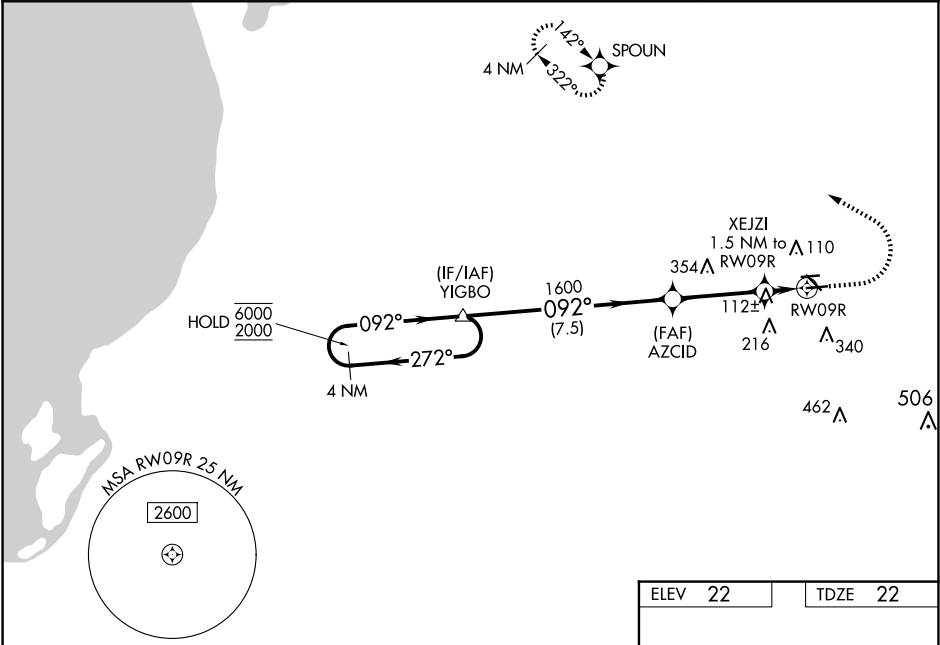


RNP APCH - GPS.			MISSED APPROACH: Climb to 1200 then climbing left turn to 2000 direct SPOUN and hold.
AWOS-3 119.975	PALM BEACH APP CON 128.3 317.4	CLNC DEL 120.825	UNICOM 123.075 (CTAF) 0



VGSI and RNAV glidepath not coincident (VGSI Angle 3.00/TCH 40).			
4 NM Holding Pattern		YIGBO	
6000 2000		AZCID 1600	
GP 3.00° TCH 43		XEJZI 1.5 NM to RWY 9R	
7.5 NM		3.3 NM	
1600		520	
272°		092°	
092°		RWY 9R	
1600		520	
7.5 NM		3.3 NM	
1600		520	
272°		092°	
092°		RWY 9R	
1600		520	
7.5 NM		3.3 NM	
1600		520	
272°		092°	
092°		RWY 9R	
1600		520	
7.5 NM		3.3 NM	
1600		520	
272°		092°	
092°		RWY 9R	
1600		520	
7.5 NM		3.3 NM	
1600		520	
272°		092°	
092°		RWY 9R	
1600		520	
7.5 NM		3.3 NM	
1600		520	
272°		092°	
092°		RWY 9R	
1600		520	
7.5 NM		3.3 NM	
1600		520	
272°		092°	
092°		RWY 9R	
1600		520	
7.5 NM		3.3 NM	
1600		520	
272°		092°	
092°		RWY 9R	
1600		520	
7.5 NM		3.3 NM	
1600		520	
272°		092°	
092°		RWY 9R	
1600		520	
7.5 NM		3.3 NM	
1600		520	
272°		092°	
092°		RWY 9R	
1600		520	
7.5 NM		3.3 NM	
1600		520	
272°		092°	
092°		RWY 9R	
1600		520	
7.5 NM		3.3 NM	
1600		520	
272°		092°	
092°		RWY 9R	
1600		520	
7.5 NM		3.3 NM	
1600		520	
272°		092°	
092°		RWY 9R	
1600		520	
7.5 NM		3.3 NM	
1600		520	
272°		092°	
092°		RWY 9R	
1600		520	
7.5 NM		3.3 NM	
1600		520	
272°		092°	
092°		RWY 9R	
1600		520	
7.5 NM		3.3 NM	
1600		520	
272°		092°	
092°		RWY 9R	
1600		520	
7.5 NM		3.3 NM	
1600		520	
272°		092°	
092°		RWY 9R	
1600		520	
7.5 NM		3.3 NM	
1600		520	
272°		092°	
092°		RWY 9R	
1600		520	
7.5 NM		3.3 NM	
1600		520	
272°		092°	
092°		RWY 9R	
1600		520	
7.5 NM		3.3 NM	
1600		520	
272°		092°	
092°		RWY 9R	
1600		520	
7.5 NM		3.3 NM	
1600		520	
272°		092°	
092°		RWY 9R	
1600		520	
7.5 NM		3.3 NM	
1600		520	
272°		092°	
092°		RWY 9R	
1600		520	
7.5 NM		3.3 NM	
1600		520	
272°		092°	
092°		RWY 9R	
1600		520	
7.5 NM		3.3 NM	
1600		520	
272°		092°	
092°		RWY 9R	
1600		520	
7.5 NM		3.3 NM	
1600		520	
272°		092°	
092°		RWY 9R	
1600		520	
7.5 NM		3.3 NM	
1600		520	
272°		092°	
092°		RWY 9R	
1600		520	
7.5 NM		3.3 NM	
1600		520	
272°		092°	
092°		RWY 9R	
1600		520	
7.5 NM		3.3 NM	
1600		520	
272°		092°	
092°		RWY 9R	
1600		520	
7.5 NM		3.3 NM	
1600		520	
272°		092°	
092°		RWY 9R	
1600		520	
7.5 NM		3.3 NM	
1600		520	
272°		092°	
092°		RWY 9R	
1600		520	
7.5 NM		3.3 NM	
1600		520	
272°		092°	
092°		RWY 9R	
1600		520	
7.5 NM		3.3 NM	
1600		520	
272°		092°	
092°		RWY 9R	
1600		520	
7.5 NM		3.3 NM	
1600		520	
272°		092°	
092°		RWY 9R	
1600		520	
7.5 NM		3.3 NM	
1600		520	
272°		092°	
092°		RWY 9R	
1600		520	
7.5 NM		3.3 NM	
1600		520	
272°		092°	
092°		RWY 9R	
1600		520	
7.5 NM		3.3 NM	
1600		520	
272°		092°	
092°		RWY 9R	
1600		520	
7.5 NM		3.3 NM	
1600		520	
272°		092°	
092°		RWY 9R	
1600		520	
7.5 NM		3.3 NM	
1600		520	
272°		092°	
092°		RWY 9R	
1600		520	
7.5 NM		3.3 NM	
1600		520	
272°		092°	
092°		RWY 9R	
1600		520	
7.5 NM		3.3 NM	
1600		520	
272°		092°	
092°		RWY 9R	
1600		520	
7.5 NM		3.3 NM	
1600		520	
272°		092°	
092°		RWY 9R	
1600		520	
7.5 NM		3.3 NM	
1600		520	
272°		092°	
092°		RWY 9R	
1600		520	
7.5 NM		3.3 NM	
1600		520	
272°		092°	
092°		RWY 9R	
1600		520	
7.5 NM		3.3 NM	
1600		520	
272°		092°	
092°		RWY 9R	
1600		520	
7.5 NM		3.3 NM	
1600		520	
272°		092°	
092°		RWY 9R	
1600		520	
7.5 NM		3.3 NM	
1600		520	
272°		092°	
092°		RWY 9R	
1600		520	
7.5 NM		3.3 NM	
1600		520	
272°		092°	
092°		RWY 9R	
1600		520	
7.5 NM		3.3 NM	
1600		520	
272°		092°	
092°		RWY 9R	
1600		520	
7.5 NM		3.3 NM	
1600		520	
272°		092°	
092°		RWY 9R	
1600		520	
7.5 NM		3.3 NM	
1600		520	
272°		092°	
092°		RWY 9R	
1600		520	
7.5 NM		3.3 NM	
1600		520	
272°		092°	
092°		RWY 9R	
1600		520	
7.5 NM		3.3 NM	
1600		520	
272°		092°	
092°		RWY 9R	
1600		520	
7.5 NM		3.3 NM	
1600		520	
272°		092°	
092°		RWY 9R	
1600		520	
7.5 NM		3.3 NM	
1600		520	
272°		092°	
092°		RWY 9R	
1600		520	
7.5 NM		3.3 NM	
1600		520	
272°		092°	
092°		RWY 9R	
1600		520	
7.5 NM		3.3 NM	
1600		520	
272°		092°	
092°		RWY 9R	
1600		520	
7.5 NM		3.3 NM	
1600		520	
272°		092°	
092°		RWY 9R	
1600		520	
7.5 NM		3.3 NM	
1600		520	
272°		092°	
092°		RWY 9R	
1600		520	
7.5 NM		3.3 NM	
1600		520	
272°		092°	
092°		RWY 9R	
1600		520	
7.5 NM		3.3 NM	
1600		520	
272°		092°	
092°		RWY 9R	
1600		520	
7.5 NM		3.3 NM	
1600		520	
272°		092°	
092°		RWY 9R	
1600		520	
7.5 NM		3.3 NM	
1600		520	
272°		092°	
092°		RWY 9R	
1600		520	
7.5 NM		3.3 NM	
1600		520	
272°		092°	
092°		RWY 9R	
1600		520	
7.5 NM		3.3 NM	
1600		520	
272°		092°	
092°		RWY 9R	
1600		520	
7.5 NM		3.3 NM	
1600		520	
272°		092°	
092°		RWY 9R	
1600		520	
7.5 NM		3.3 NM	
1600		520	
272°		092°	
092°		RWY 9R	
1600		520	
7.5 NM		3.3 NM	
1600		520	
272°		092°	
092°		RWY 9R	
1600		520	
7.5 NM		3.3 NM	
1600		520	
272°		092°	
092°		RWY 9R	
1600		520	
7.5 NM		3.3 NM	
1600		520	
272°		092°	
092°		RWY 9R	
1600		520	
7.5 NM		3.3 NM	
1600		520	
272°		092°	
092°		RWY 9R	
1600		520	
7.5 NM		3.3 NM	
1600		520	
272°		092°	
092°		RWY 9R	
1600		520	
7.5 NM		3.3 NM	
1600		520	
272°		092°	
092°		RWY 9R	
1600		520	
7.5 NM		3.3 NM	
1600		520	
272°		092°	
092°		RWY 9R	
1600		520	
7.5 NM		3.3 NM	
1600		520	
272°		092°	
092°		RWY 9R	
1600		520	
7.5 NM		3.3 NM	
1600		520	
272°		092°	
092°		RWY 9R	
1600		520	
7.5 NM		3.3 NM	
1600		520	
272°		092°	
092°		RWY 9R	
1600		520	
7.5 NM		3.3 NM	
1600		520	
272°		092°	
092°		RWY 9R	
1600		520	
7.5 NM		3.3 NM	
1600		520	
272°		092°	
092°		RWY 9R	
1600		520	
7.5 NM		3.3 NM	
1600		520	
272°		092°	
092°		RWY 9R	
1600		520	
7.5 NM		3.3 NM	
1600		520	
272°		092°	
092°		RWY 9R	
1600		520	
7.5 NM		3.3 NM	
1600		520	
272°		092°	
092°		RWY 9R	
1600		520	
7.5 NM		3.3 NM	
1600		520	
272°		092°	
092°		RWY 9R	
1600		520	
7.5 NM		3.3 NM	
1600		520	
272°		092°	
092°		RWY 9R	
1600		520	
7.5 NM		3.3 NM	
1600		520	
272°		092°	
092°		RWY 9R	
1600		520	
7.5 NM		3.3 NM	
1600		520	
272°		092°	
092°		RWY 9R	
1600		520	
7.5 NM		3.3 NM	
1600		520	
272°		092°	
092°		RWY 9R	
1600		520	
7.5 NM		3.3 NM	
1600		520	
272°		092°	
092°		RWY 9R	
1600		520	
7.5 NM		3.3 NM	
1600		520	
272°		092°	
092°		RWY 9R	
1600			