

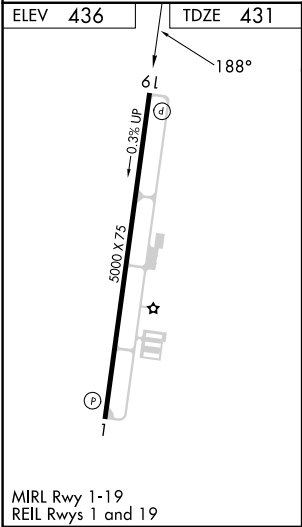
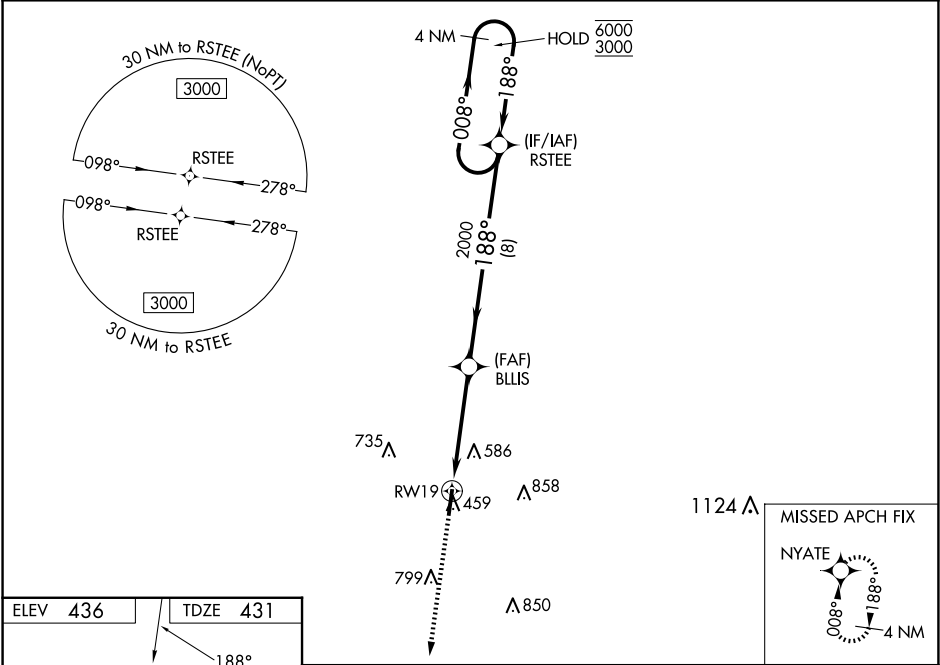
WAAS CH <b>53624</b> <b>W19A</b>	APP CRS <b>188°</b>	Rwy Idg TDZE <b>431</b> Apt Elev <b>436</b>	<b>5000</b> <b>431</b> <b>436</b>
--	------------------------	---	---

RNAV (GPS) RWY 19

FAYETTE COUNTY (FYE)

RNP APCH - GPS.	<div><div><div><div><div></div><div></div></div><div><div></div><div></div></div></div><div><div><div>Baro-VNAV and VDP NA when using Memphis Intl altimeter setting. Rwy 19 helicopter visibility reduction below ¾ SM NA. When local altimeter setting not received, use Memphis Intl altimeter setting: increase LPV DA to 817 feet and all visibilities ½ SM, increase LNAV/VNAV DA to 779 feet; increase all MDA 100 feet and visibility LNAV Cat C ½ SM and Circling Cat C ½ SM.</div></div></div></div></div>	MISSED APPROACH: Climb to 3000 direct NYATE and hold.
-----------------	--	---

AWOS-3 <b>119.875</b>	MEMPHIS APP CON <b>125.8 338.3</b>	CTAF <b>122.9</b>
--------------------------	---------------------------------------	----------------------



3000	NYATE	VGSI and RNAV glidepath not coincident (VGSI Angle 3.07/TCH 31).		4 NM Holding Pattern