

WAAS CH 93723 W01A	APP CRS 008°	Rwy Idg TDZE 436 Apt Elev 436	5000
--	------------------------	---	-------------

RNAV (GPS) RWY 1

FAYETTE COUNTY (FYE)

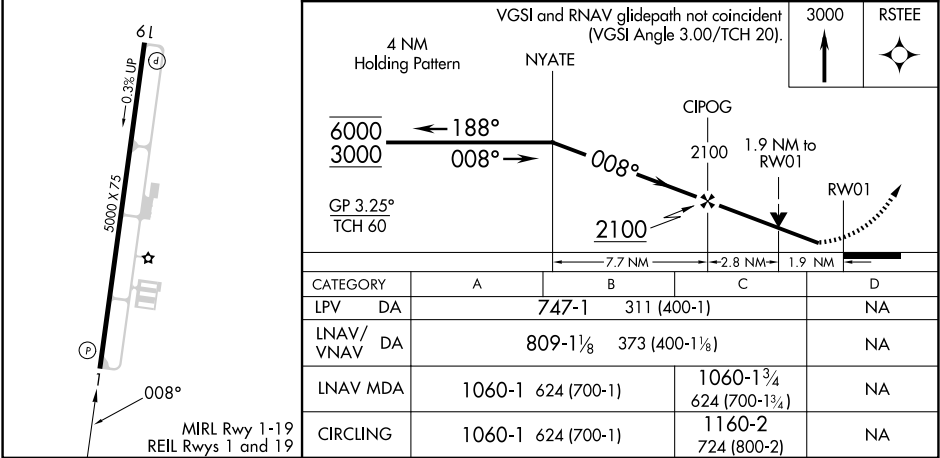
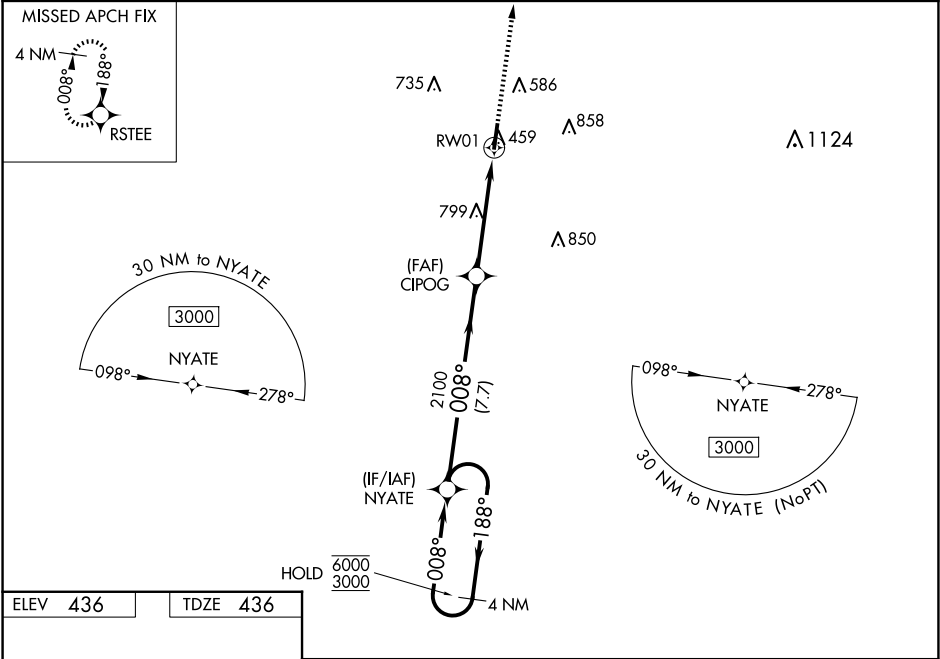
RNP APCH - GPS.

▼

Baro-VNAV and VDP NA when using Memphis Intl altimeter setting. Rwy 1 helicopter visibility reduction below ¾ SM NA. For uncompensated Baro-VNAV systems, LNAV/VNAV NA below -1.5°C or above 54°C. When local altimeter setting not received, use Memphis Intl altimeter setting: increase LPV DA to 843 feet and all visibilities ⅓ SM; increase LNAV/VNAV DA to 905 feet and all visibilities ⅓ SM; increase all MDA 100 feet and visibility LNAV Cat C ¼ SM and Circling Cat C ½ SM.

MISSED APPROACH:
Climb to 3000 direct
RSTEE and hold.

AWOS-3 119.875	MEMPHIS APP CON 125.8 338.3	CTAF 122.9
--------------------------	---------------------------------------	----------------------



SE-1, 07 AUG 2025 to 04 SEP 2025

SE-1, 07 AUG 2025 to 04 SEP 2025