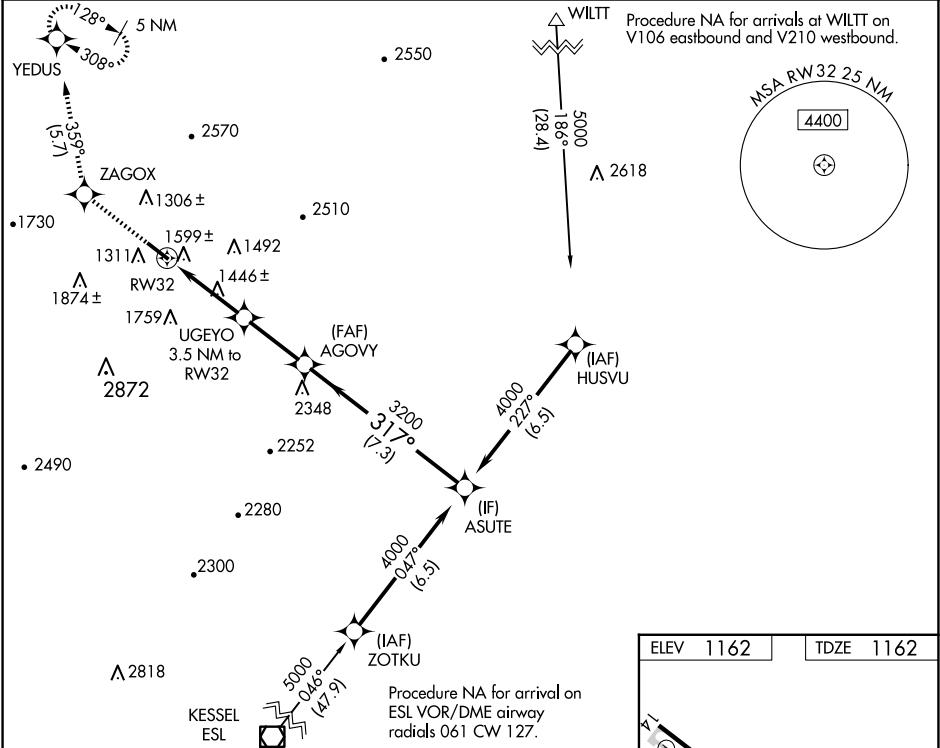


WAAS CH 90437 W32A	APP CRS 317°	Rwy Idg TDZE 1162 Apt Elev 1162	5006
--	------------------------	---	-------------

RNAV (GPS) RWY 32

BEDFORD COUNTY (HMZ)

RNP APCH - GPS.		MISSED APPROACH: Climb to 5000 direct ZAGOX and on track 359° to YEDUS and hold, continue climb-in-hold to 5000.
▼ Rwy 32 helicopter visibility reduction below ¾ SM NA. VDP NA when using Altoona altimeter setting. When local altimeter setting not received, use Altoona altimeter setting and increase all MDA 100 feet, increase LP Cat C visibility ¼ SM, increase LNAV Cat B visibility ¼ SM and Cat C visibility ½ SM, and increase Circling Cats A and B visibility ¼ SM.		
AWOS-3 123.675	JOHNSTOWN APP CON ★ 121.2 299.2	UNICOM 122.7 (CTAF) 0



5000	ZAGOX	tr 359°	YEDUS	VGSI and descent angles not coincident (VGSI Angle 4.00/TCH 53).	ASUTE
				AGOVY	4000
				UGEYO 3.5 NM to RW32	
				1.2 NM to RW32	
				3.58 TCH 50	
				2540	
				3200	
				317°	
				7.3 NM	
				2.8 NM	
				2.3 NM	
				1.2 NM	
CATEGORY	A	B	C	D	
LP MDA	1740-1	578 (600-1)	1740-1½ 578 (600-1½)	NA	
LNAV MDA	1860-1	698 (700-1)	1860-2 698 (700-2)	NA	
CIRCLING	1900-1 738 (800-1)	1960-1 798 (800-1)	2200-3 1038 (1100-3)	NA	

