

WAAS CH 72916 W14A	APP CRS 137°	Rwy Idg TDZE Apt Elev	5006 1157 1162
--	------------------------	-----------------------------	---

RNAV (GPS) RWY 14

BEDFORD COUNTY (HMZ)

RNP APCH.



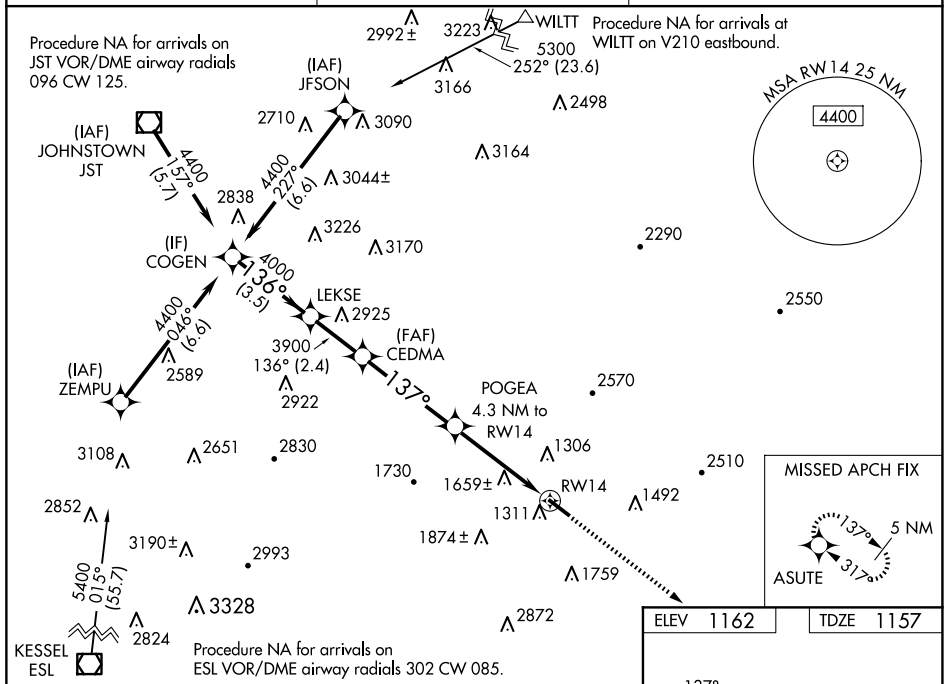
For uncompensated Baro-VNAV systems, LNAV/VNAV NA below -17°C or above 54°C.

MISSED APPROACH: Climb to 5000 direct ASUTE and hold, continue climb-in-hold to 5000.

AWOS-3 123.675	JOHNSTOWN APP CON ★ 121.2 299.2	UNICOM 122.7 (CTAF) ①
--------------------------	---	---------------------------------

Procedure NA for arrivals on
JST VOR/DME airway radials
096 CW 125.

Procedure NA for arrivals at
WILTT on V210 eastbound.



COGN VORTAC
GP 3.00° TCH 41

RNAV Routes:

- COGN 4400 → LEKSE 4000 (136°)
- LEKSE 4000 → CEDMA 3900 (137°)
- CEDMA 3900 → POGEA 4.3 NM to RW14 (2.3 NM to RW14)
- POGEA 4.3 NM to RW14 (2.3 NM to RW14)

Distances: 3.5 NM, 2.4 NM, 4.2 NM, 2 NM, 2.3 NM

Performance Data Table:

CATEGORY	A	B	C	D
LPV DA	1640-1½		483 (500-1½)	
RNAV/DA	2050-4		893 (900-4)	
RNAV MDA	1920-1 763 (800-1)	1920-1¼ 763 (800-1¼)	1920-2½	763 (800-2½)
C CIRCLING	1920-1 758 (800-1)	1960-1¼ 798 (800-1¼)	2200-3 1038 (1100-3)	2940-3 1778 (1800-3)

REIL Rwy 14 and 32
MRL Rwy 14-32

RNAV (GPS) RWY 14