

APP CRS <b>352°</b>	Rwy Idg TDZE Apt Elev	<b>4404</b> <b>3454</b> <b>3454</b>
------------------------	-----------------------------	---

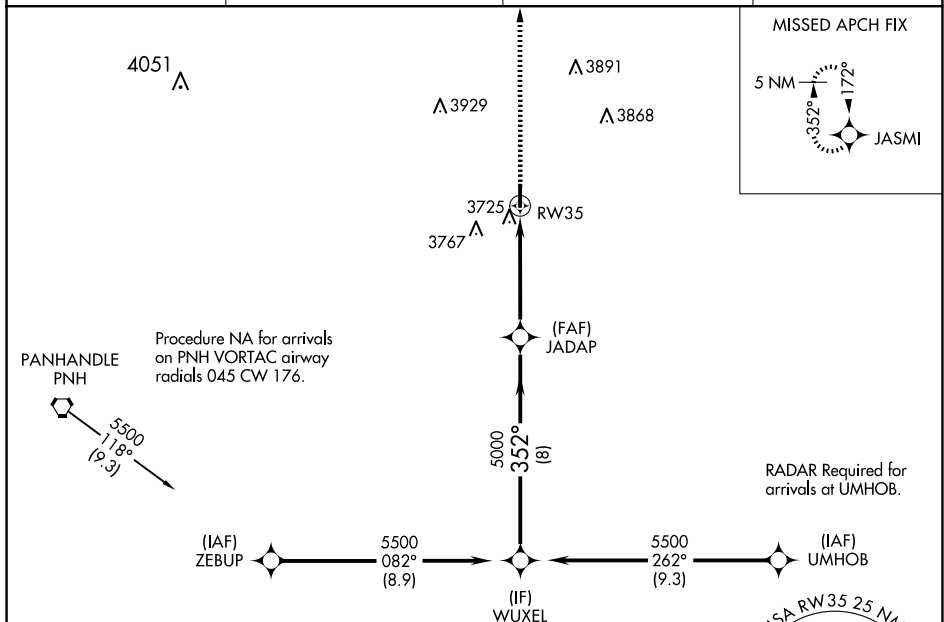
RNAV (GPS) RWY 35  
PANHANDLE-CARSON COUNTY (T45)

RNP APCH - GPS.

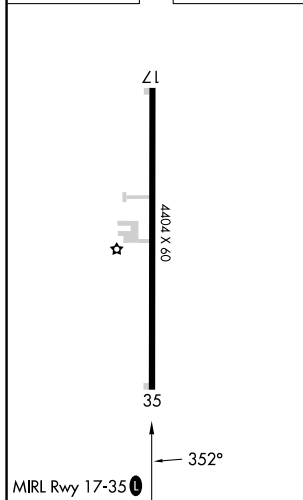
**T** Use Rick Husband Amarillo Intl altimeter setting; when not received, use  
**A** <sup>NA</sup> Hutchinson County altimeter setting and increase all MDA 40 feet; increase LNAV  
 Cat C visibility to 2. Rwy 35 helicopter visibility reduction below  $\frac{3}{4}$  SM NA.

**MISSED APPROACH:** Climb to 5500 direct JASMI and hold.

AMA ASOS <b>118.85 350.3</b>	AMARILLO APP CON ★ <b>119.5 307.0</b>	UNICOM <b>122.7</b> (CTAF)	<b>123.5</b> 
---------------------------------	--	-------------------------------	--



ELEV 3454		TDZE 3454
-----------	--	-----------



CATEGORY	A	B	C	D
LNAV MDA	1100-1	646 (700-1)	4100-1 646 (700-1%)	NA
CIRCLING	1140-1	686 (700-1)	4140-2 686 (700-2)	NA