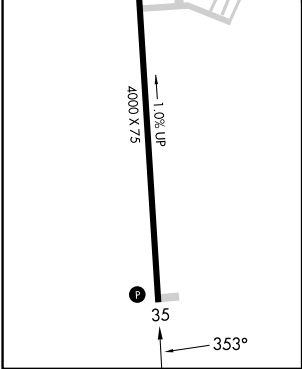
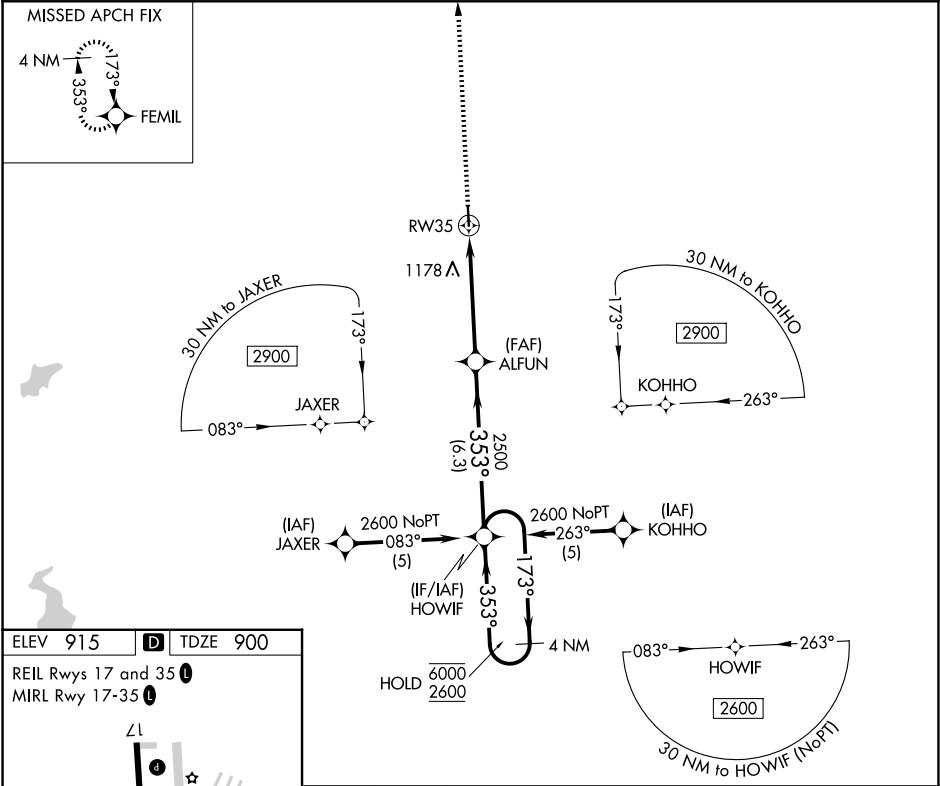




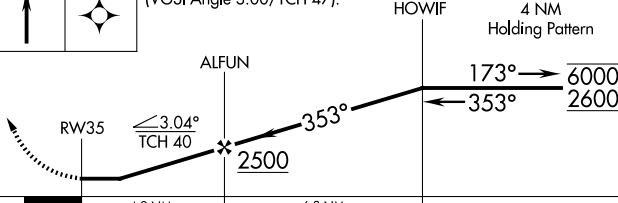
APP CRS	Rwy Ldg	4000
353°	TDZE	900
	Apt Elev	915

RNAV (GPS) RWY 35
LAWRENCE SMITH MEML (L.R.Y)

RNP APCH.	MISSED APPROACH: Climb to 3000 direct FEMIL and hold.
<div>Procedure NA at night.</div> <div>Rwy 35 helicopter visibility reduction below 1 SM NA.</div>	

AWOS-3PT 119.975	KANSAS CITY CENTER 125.55 327.0	UNICOM 122.9 (CTAF) 0
---------------------	------------------------------------	--------------------------



3000	FEMIL	VGSI and descent angles not coincident (VGSI Angle 3.00/TCH 47).			
					
		4.9 NM		6.3 NM	
CATEGORY	A		B	C	D
LNAV MDA	1380-1		480 (500-1)	1380-1 $\frac{3}{8}$ 480 (500-1 $\frac{3}{8}$)	NA
CIRCLING	1400-1 485 (500-1)		1460-1 545 (600-1)	1520-1 $\frac{3}{4}$ 605 (700-1 $\frac{3}{4}$)	NA

NC-3, 07 AUG 2025 to 04 SEP 2025

NC-3, 07 AUG 2025 to 04 SEP 2025