

APP CRS  
173°

Rwy Ldg  
TDZE  
Apt Elev

4000  
915  
915

RNAV (GPS) RWY 17

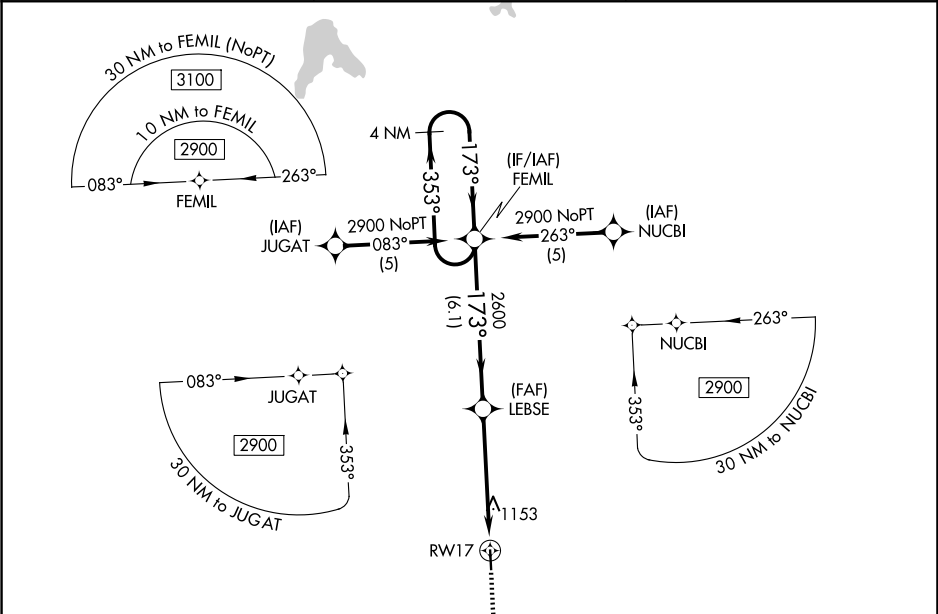
LAWRENCE SMITH MEML (L.R.Y)

RNP APCH.

When local altimeter setting not received, use Kansas City Downtown/Wheeler Fld altimeter setting: increase all MDAs 100 feet and visibility Cat C ¼ mile.  
Procedure NA at night. Rwy 17 helicopter visibility reduction below 1 SM NA.

MISSED APPROACH: Climb to 2600 direct HOWIF and hold.

AWOS-3PT 119.975	KANSAS CITY CENTER 125.55 327.0	UNICOM 122.9 (CTAF) 0
---------------------	------------------------------------	--------------------------



ELEV 915

TDZE 915

173°

4000 X 75

1.0% UP

35

MIRL Rwy 17-35

REIL Rws 17 and 35

MISSED APCH FIX

HOWIF

4 NM

2600

HOWIF

VGSI and descent angles not coincident (VGSI Angle 4.00/TCH 53).

4 NM Holding Pattern

FEMIL

2900

353°

173°

LEBSE

2600

3.04° TCH 40

6.1 NM

5.1 NM

RW17

CATEGORY	A	B	C	D
LNAV MDA	1420-1	505 (600-1)	1420-1½ 505 (600-1½)	NA
CIRCLING	1420-1 505 (600-1)	1460-1 545 (600-1)	1520-1¾ 605 (700-1¾)	NA

NC-3, 07 AUG 2025 to 04 SEP 2025

NC-3, 07 AUG 2025 to 04 SEP 2025