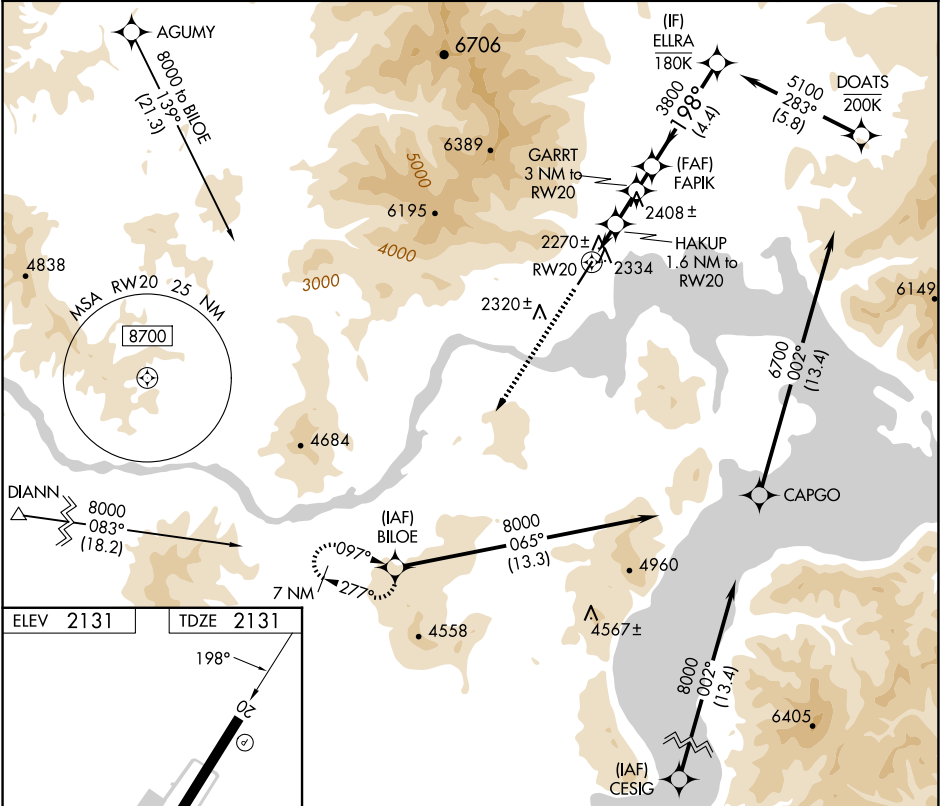


WAAS CH 99542 W20A	APP CRS 198°	Rwy Ldg TDZE Apt Elev	5501 2131 2131
--	------------------------	-----------------------------	---

RNAV (GPS) Z RWY 20
SANDPOINT (SZT')

RNP APCH.	MISSED APPROACH: Climb to 6600 direct BILOE and hold, continue climb-in-hold to 6600. * Missed approach requires minimum climb of 318 feet per NM to 4500; if unable to meet climb gradient, see RNAV (GPS) Y RWY 20.
<div><div>▼</div><div>⚠</div><div>❄</div></div> <div>Rwy 20 helicopter visibility reduction below ¾ SM NA. When local altimeter not received, procedure NA. -1.6°C</div>	

AWOS-2 135.425	SEATTLE CENTER 123.95 290.55	UNICOM 122.7 (CTAF) ①
--------------------------	--	---------------------------------



6600

↑

BILOE

✦

VGSI and descent angles not coincident
(VGSI Angle 3.75/TCH 50).

ELLRA

HAKUP

1.6 NM to RW20

GARRT

3 NM to RW20

FAPIK

198°

5100

≤3.77°

TCH 55

3800

0.9 NM to RW20

0.9 NM

0.7 NM

1.4 NM

1 NM

4.4 NM

2820

3380

CATEGORY	A		B		C		D
LP MDA*	2520-1 389 (400-1)		2520-1½ 389 (400-1½)		2520-1⅛ 389 (400-1⅛)		NA

MIRL Rwy 2-20

REIL Rwy 2 and 20

①

①