

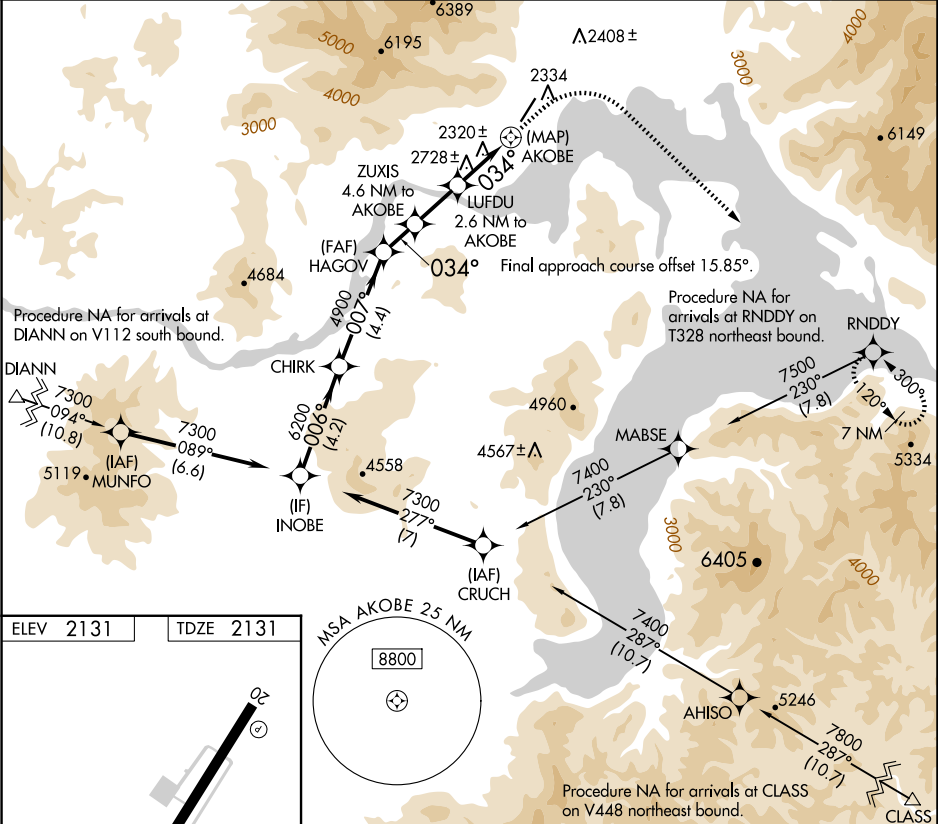
WAAS CH 63146 W02A	APP CRS 034°	Rwy Ldg TDZE Apt Elev	5501 2131 2131
--	------------------------	-----------------------------	---

RNAV (GPS) Z RWY 2

SANDPOINT (SZT')

RNP APCH - GPS.	MISSED APPROACH: Climb to 3900 then climbing right turn to 9000 direct RNDY and hold, continue climb-in-hold to 9000. *Missed approach requires minimum climb of 350 feet per NM to 6500; If unable to meet climb gradient, see RNAV (GPS)-B.
<div><div><div></div><div></div><div></div></div><div>Rwy 2 helicopter visibility reduction below 1 SM NA. Procedure NA at night.</div></div>	

AWOS-2 135.425	SEATTLE CENTER 123.95 290.55	UNICOM 122.7 (CTAF) 0
--------------------------	--	---------------------------------



5501 x 75

034°

MIRL Rwy 2-20

REIL Rws 2 and 20

INOBE

CHIRK

HAGOV

ZUXIS

LUFDU

AKOBE

7300

6200

4900

4300

3480

4.2 NM

4.4 NM

1.5 NM

2.1 NM

2.6 NM

0.7

006°

007°

3.75°

TCH 50

034°

4.6 NM to AKOBE

2.6 NM to AKOBE

VGSI and descent angles not coincident (VGSI Angle 3.75/TCH 28).

3900

9000

RNDYD

CATEGORY	A	B	C	D	
LP	MDA*	3100-1¼ 969 (1000-1¼)	3100-1½ 969 (1000-1½)	3100-3 969 (1000-3)	NA