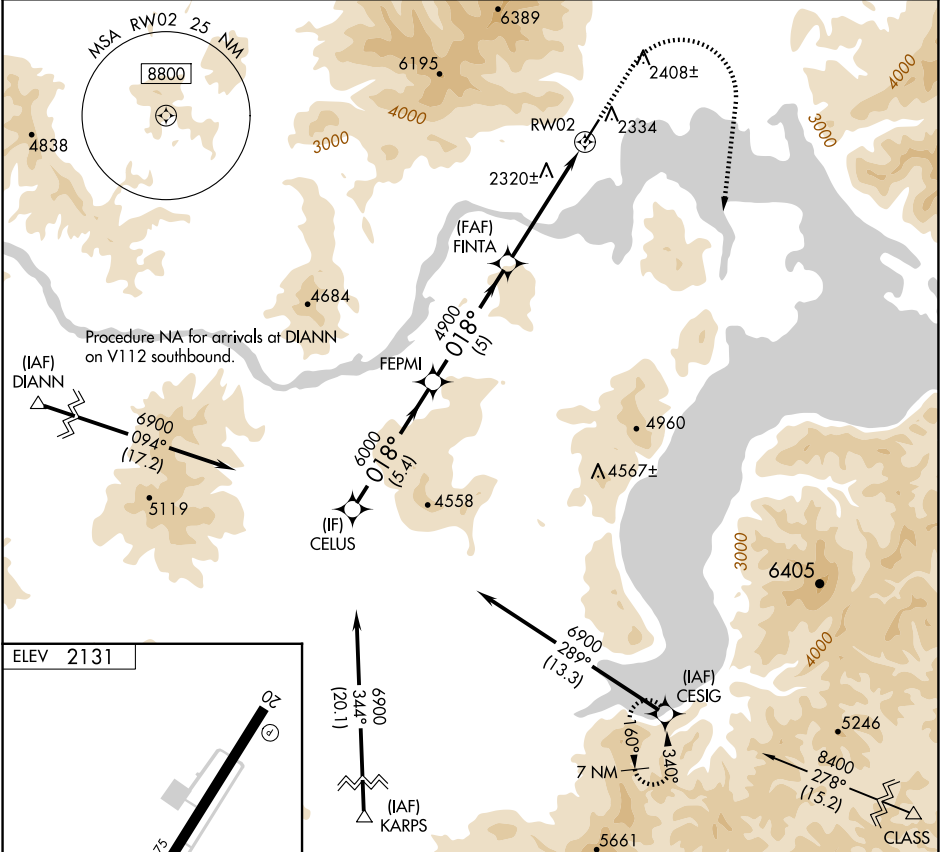


APP CRS	Rwy Ldg	N/A
018°	TDZE	N/A
	Apt Elev	2131

RNAV (GPS)-B  
SANDPOINT (SZT')

<p><b>⚠</b> DME/DME RNP-0.3 NA. Circling NA west of Rwy 2-20. <b>⚠</b> When local altimeter setting not received, use Deer Park altimeter setting and increase all MDA 120 feet.</p>	<p>MISSED APPROACH: Climb to 5800 then climbing right turn to 7900 direct CESIG and hold.</p>
--	---

AWOS-2 135.425	SEATTLE CENTER 123.95 290.55	UNICOM 122.7 (CTAF) <b>0</b>
-------------------	---------------------------------	---------------------------------



<p>CELUS</p> <p>6900</p> <p>018°</p> <p>6000</p> <p>4900</p> <p>5.4 NM</p> <p>5 NM</p> <p>5.2 NM</p> <p>FEPMI</p> <p>FINTA</p> <p>RW02</p>				<p>5800</p> <p>7900</p> <p>CESIG</p>
<p>CATEGORY</p> <p>A</p> <p>B</p> <p>C</p> <p>D</p>				
<p><b>0</b> CIRCLING</p> <p>3600-1¼</p> <p>1469 (1500-1¼)</p> <p>3600-1½</p> <p>1469 (1500-1½)</p> <p>3600-3</p> <p>1469 (1500-3)</p> <p>4180-3</p> <p>2049 (2100-3)</p>				

NW-1, 07 AUG 2025 to 04 SEP 2025

NW-1, 07 AUG 2025 to 04 SEP 2025