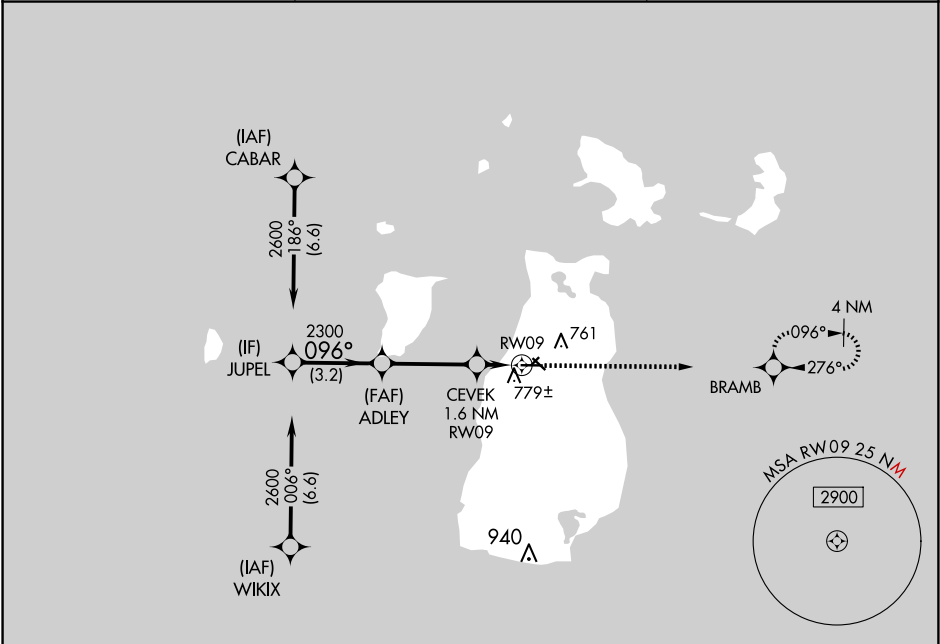


WAAS CH 77943 W09A	APP CRS 096°	Rwy ldg TDZE Apt Elev	4299 670 670
--	------------------------	-----------------------------	---

RNAV (GPS) RWY 9

BEAVER ISLAND (SJX)

RNP APCH - GPS.		MISSED APPROACH: Climb to 2600 direct BRAMB and hold.
Circling NA to Rwys 5-23 and 14-32. For uncompensated Baro-VNAV systems, LNAV/VNAV NA below -16°C or above 54°C.		
AWOS-3 118.075	MINNEAPOLIS CENTER 134.6 354.05	UNICOM 122.8 (CTAF) 0



VGSI and RNAV glidepath not coincident (VGSI Angle 3.00/TCH 24).				ELEV 670	TDZE 670
				ELEV 670	TDZE 670
CATEGORY	A	B	C	D	
LPV DA	920-1 250 (300-1)			NA	
LNAV/VNAV DA	949-1 279 (300-1)			NA	
LNAV MDA	1040-1 370 (400-1)			NA	
CIRCLING	1120-1 450 (500-1)	1180-1½ 510 (600-1½)		NA	
MIRL Rwy 9-27 REIL Rwy 9 and 27					

EC-1, 07 AUG 2025 to 04 SEP 2025

EC-1, 07 AUG 2025 to 04 SEP 2025