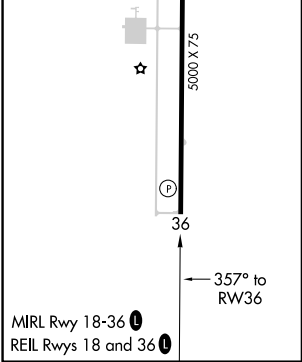
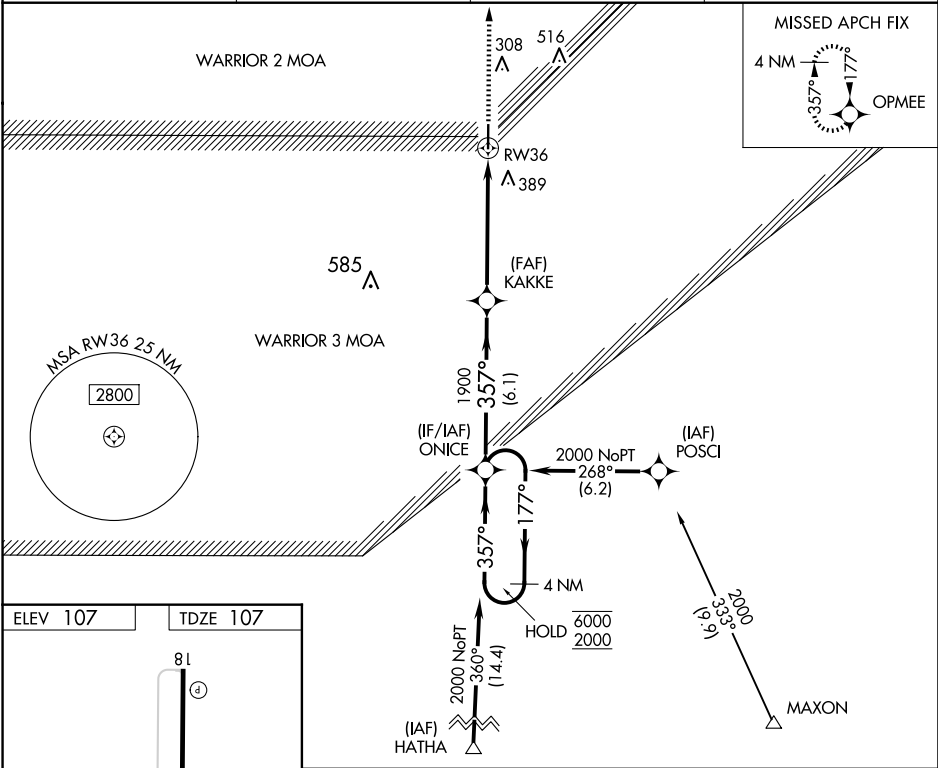


APP CRS	Rwy Idg	5000
357°	TDZE	107
	Apt Elev	107

RNAV (GPS) RWY 36
ALLEN PARISH (ACP)

RNP APCH - GPS.	MISSED APPROACH: Climb to 2200 direct OPMEE and hold.
-----------------	---

AWOS-3PT 118.275	POLK APP CON 123.7 261.3	GCO 135.075	UNICOM 122.8 (CTAF) 1
---------------------	-----------------------------	----------------	--------------------------



4 NM Holding Pattern ONICE				2200	OPMEE
6000 ← 177° → 357° → 357° → 1900				KAKKE 3.00° TCH 51 RW36	
6.1 NM 5.5 NM					
CATEGORY	A	B	C	D	
LNAV MDA	540-1	433 (500-1)	540-1¼ 433 (500-1¼)	NA	
CIRCLING	560-1 453 (500-1)	700-1 593 (600-1)	760-1¾ 653 (700-1¾)	NA	