

25163

VOR-A
WHITEMAN (WHP)

MISSED APPROACH: Climbing left turn to 3900 direct VNY VOR/DME then on VNY VOR/DME R-255 to CANOG INT/5.1 DME and hold.

3416°

IAF
FILLMORE
112.5 FIM
Chan 72

Procedure NA for arrivals at FIM VORTAC
on V518 westbound.

2897°

4400 NoPT
120° (11.3)

(IAF)
GINNA
VNY 16.9

4400 NoPT
075° (5.5)

3900
075° (6.3)

R-255

2714°

3765°

2314°

(IF/IAF)
CANOG
VNY 5.1

3200
075° (5.1)

1534°

1103°

1173°

1400±

1336°

2067°

1462°

5215°

1323°

5264°

4636°

3892°

5019°

4949°

2000

3000

4000

5000

4600 NoPT
053° (17.6)

SUANA
VNY 11.4

HOLD
6000
3900

075°
1 min
255°

4600
255° (5.1)

Van Nuys

VAN NUYS
113.1 VNY
Chan 78

IAF
VENTURA
116.55 VTU
Chan 112(Y)

2908°

2126°

4400
317° (14.5)

1870°

2025°

SANTA MONICA
110.8 SMO
Chan 45

4400
320° (19.2)

LOS ANGELES
113.6 LAX
Chan 83

ELEV 1003

MSA VNY 25 NM

7300

9300

6200

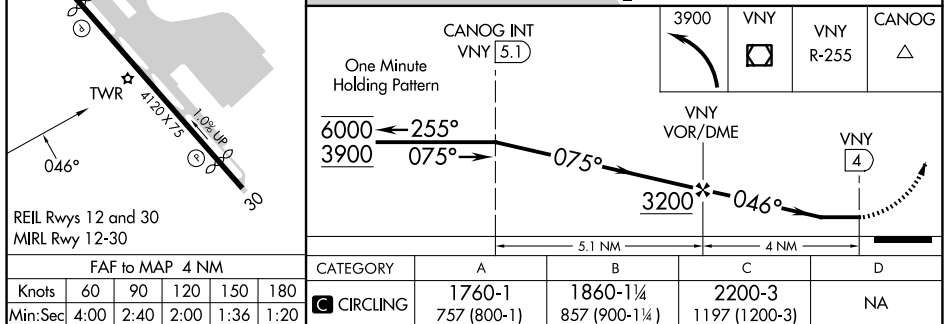
4400

095°

185°

275°

005°



WHITEMAN (WHP)
VOR-A

34°16'N-118°25'W