

DME required.

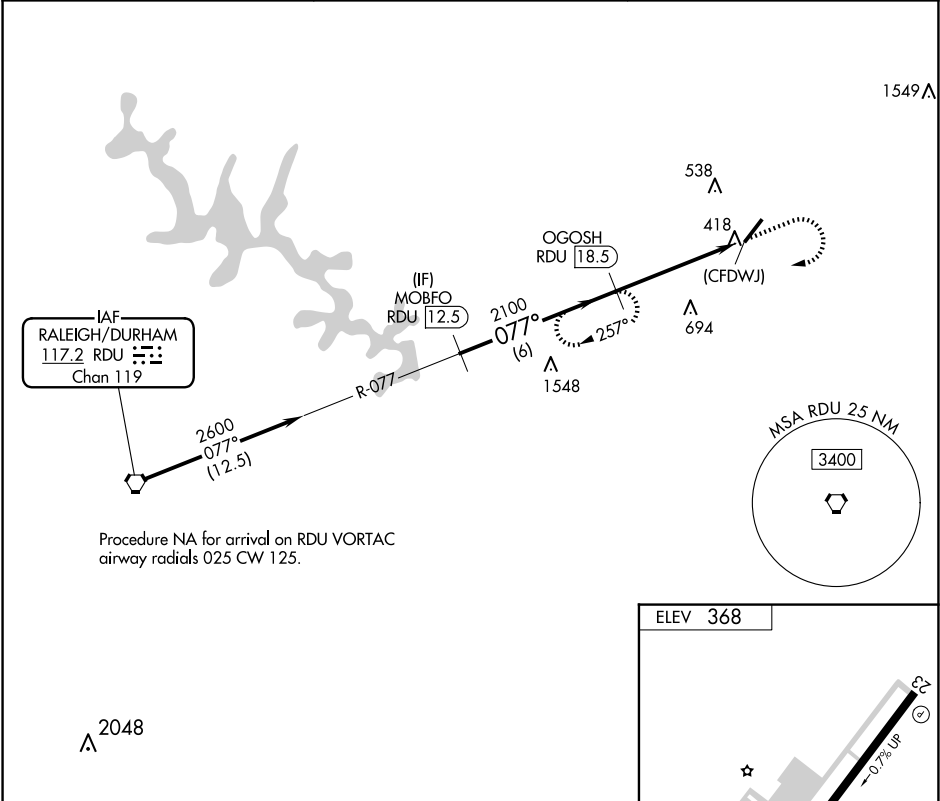
▼

▲

When local altimeter not received, use Raleigh-Durham Intl altimeter setting and increase all MDA 80 feet and Cats B/C visibility ¼ SM.

MISSED APPROACH: Climb to 1200 then climbing right turn to 2600 on heading 280° and on RDU VORTAC R-077 to OGOSH/RDU 18.5 DME and hold.

AWOS-3 118.325	RALEIGH APP CON 125.3 353.675	UNICOM 123.0 (CTAF) 0
-------------------	----------------------------------	--------------------------



Procedure NA for arrival on RDU VORTAC
airway radials 025 CW 125.

