

WAAS
CH **62825**
W23A

APP CRS
227°

Rwy Idg
TDZE **352**
Apt Elev **368**

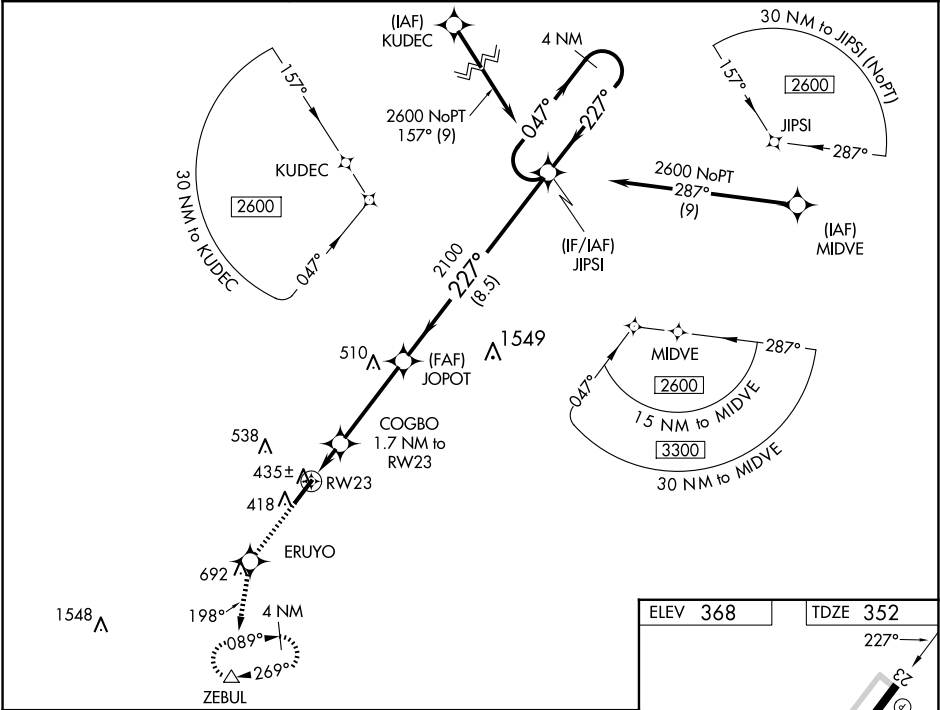
RNAV (GPS) RWY 23

TRIANGLE NORTH EXEC (LHZ)

Baro-VNAV NA when using Raleigh-Durham altimeter setting. For uncompensated Baro-VNAV systems, LNAV/VNAV NA below -15°C (5°F) or above 41°C (105°F). When VGSi inop, Straight-in/Circling Rwy 23 procedure NA at night. DME/DME RNP-0.3 NA. Helicopter visibility reduction below 1 SM NA. When local altimeter setting not received, use Raleigh-Durham altimeter setting and increase LPV DA to 667 feet; LNAV/VNAV DA to 684 feet and all visibilities ½ SM. Increase all MDAs 80 feet and visibility Cats C/D ¾ SM.

MISSED APPROACH: Climb to 3300 direct ERUYO and on track 198° to ZEBUL and hold, continue climb-in-hold to 3300.

AWOS-3 118.325	RALEIGH APP CON 125.3 353.675	UNICOM 123.0 (CTAF) 0
--------------------------	---	---------------------------------



3300	ERUYO	ZEBUL			
↑	198°	△			
* LNAV only					
COGBO 1.7 NM to RW23					
RW23					
900*					
1.7 NM 3.7 NM 8.5 NM					
JOPOT 2100					
JIPSI 2600					
4 NM Holding Pattern					
047°→ 2600					
← 227°					
GP 3.00° TCH 46					
CATEGORY		A	B	C	D
LPV	DA	602-1 250 (300-1)			
LNAV/ VNAV	DA	619-1 267 (300-1)			
LNAV	MDA	700-1 348 (400-1)			
CIRCLING		800-1 432 (500-1)	840-1 472 (500-1)	980-1¾ 612 (700-1¾)	1000-2 632 (700-2)

