

WAAS CH 78340 W32A	APP CRS 323°	Rwy Ldg 4002 TDZE 45 Apt Elev 45
--	------------------------	---

RNAV (GPS) RWY 32
EASTPORT MUNI (EPM)

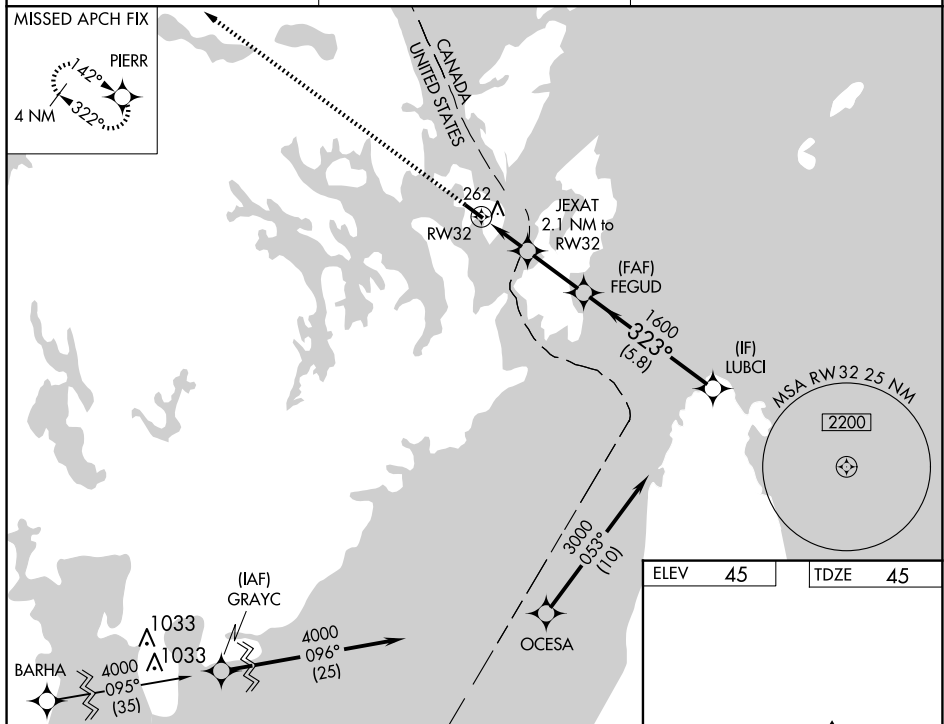
RNP APCH - GPS.

▼ -15°C or above 34°C ; Baro-VNAV and VDP-NA when using Hancock County/Bar Harbor altimeter setting. Rwy 32 helicopter visibility reduction below $\frac{1}{2}$ SM NA. When local altimeter setting not received, use Hancock County/Bar Harbor altimeter setting; increase LPV DA to 531 feet and all visibilities $\frac{3}{4}$ SM; increase LNAV/VNAV DA to 576 feet and all visibilities $\frac{1}{2}$ SM; increase all MDAs 160 feet and LNAV Cat C/D visibility $\frac{3}{4}$ SM and Circling Cats C/D visibilities $\frac{3}{4}$ SM.

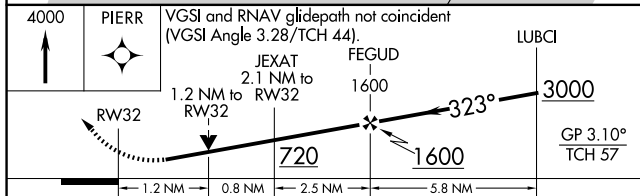
MISSED APPROACH:
Climb to 4000 direct
PIERR and hold,
continue climb-in-hold
to 4000.


AWOS-AV 122.8	BOSTON CENTER 124.25 290.5	UNICOM 122.8 (CTAF) 0
-------------------------	--------------------------------------	--

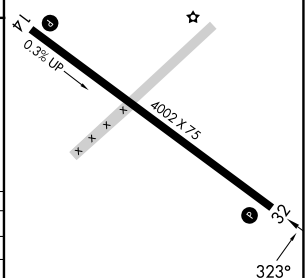
MISSED APCH FIX



ELEV	45		TDZE	45
------	----	--	------	----



CATEGORY		A	B	C	D
LPV	DA	378-1		333 (400-1)	
INAV/ VNAV	DA	423-1		378 (400-1)	
INAV	MDA	520-1	475 (500-1)	520-1 $\frac{3}{8}$	475 (500-1 $\frac{3}{8}$)
 CIRCLING		580-1	535 (600-1)	640-1 $\frac{1}{2}$ 595 (600-1 $\frac{1}{2}$)	820-2 $\frac{1}{2}$ 775 (800-2 $\frac{1}{2}$)



MIRL Rwy 14-32 **L**
REIL Rwy 14 and 32 **L**