

WAAS CH 72940 W14A	APP CRS 142°	Rwy Ldg TDZE 44 Apt Elev 45
--	------------------------	---

RNAV (GPS) RWY 14

EASTPORT MUNI (EPM)

RNP APCH - GPS.

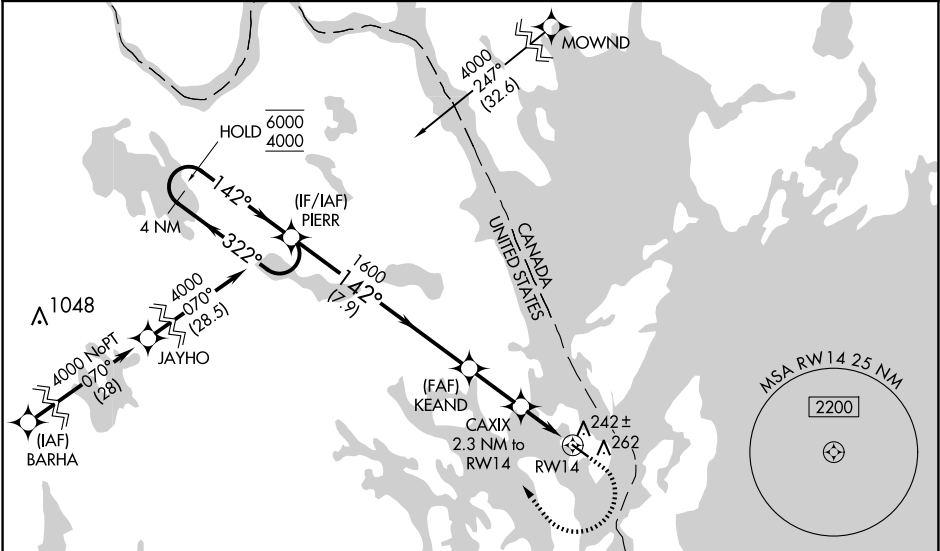
▼

⚠

Rwy 14 helicopter visibility reduction below 1 SM NA. For uncompensated Baro-VNAV systems, LNAV/VNAV NA below -15°C or above 54°C. Baro-VNAV NA when using Hancock County-Bar Harbor altimeter setting. Rwy 14 Straight-in and Circling minimums NA at night. When local altimeter setting not received, use Hancock County/Bar Harbor altimeter setting: increase LPV DA to 462 feet and all visibilities ½ SM; increase LNAV/VNAV DA to 565 feet and all visibilities ½ SM; increase all MDA 160 feet and LNAV visibility Cat C/D ¾ SM and Circling visibility Cat C/D ¾ SM.

MISSED APPROACH: Climb to 520 then climbing right turn to 4000 direct PIERR and hold, continue climb-in-hold to 4000.

AWOS-AV 122.8	BOSTON CENTER 124.25 290.5	UNICOM 122.8 (CTAF) 0
-------------------------	--------------------------------------	---------------------------------



4 NM Holding Pattern

PIERR

6000 ← 322°

4000 → 142°

GP 3.10°

TCH 53

7.9 NM

2.3 NM

2.3 NM

520

4000

PIERR

KEAND

1600

CAXIX

2.3 NM to RW14

RW14

840

1600

142°

0.3% UP

4002 X 75

CATEGORY	A	B	C	D
LPV DA	309-1		265 (300-1)	
LNAV/VNAV DA	412-1		368 (400-1)	
LNAV MDA	500-1	456 (500-1)	500-1¾	456 (500-1¾)
CIRCLING	580-1	535 (600-1)	640-1½ 595 (600-1½)	820-2½ 775 (800-2½)

MIRL Rwy 14-32 0

REIL Rwy 14 and 32 0

NE-1, 07 AUG 2025 to 04 SEP 2025

NE-1, 07 AUG 2025 to 04 SEP 2025