

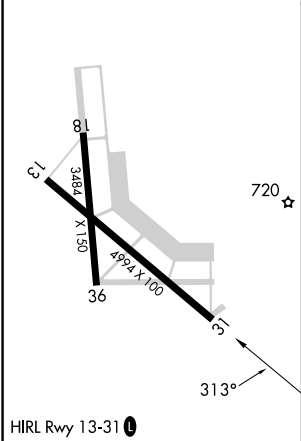
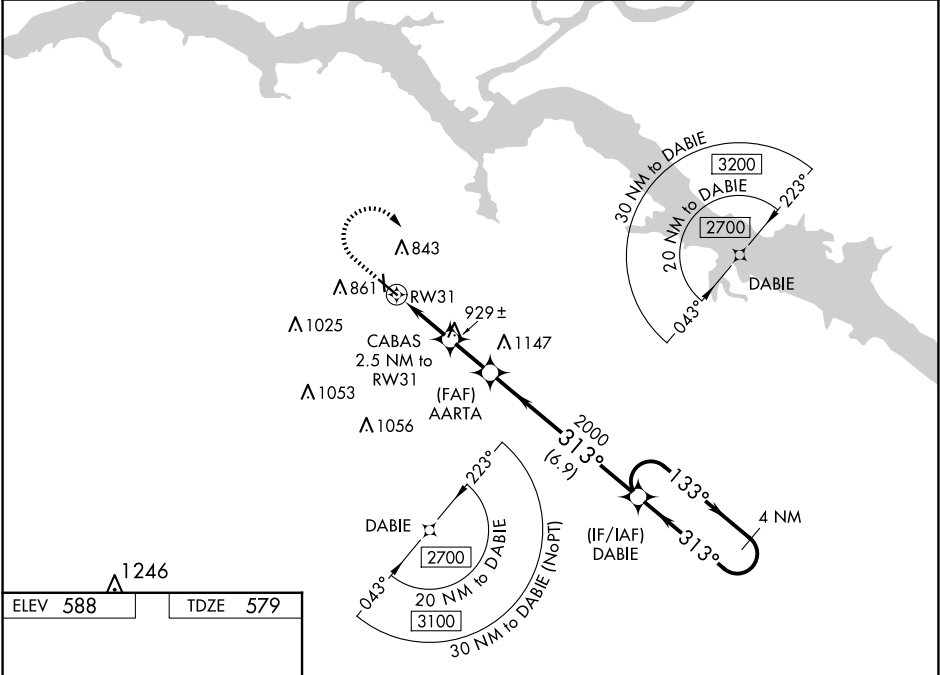
WAAS CH <b>48830</b> <b>W31A</b>	APP CRS <b>313°</b>	Rwy Idg TDZE <b>579</b> Apt Elev <b>588</b>
--	------------------------	---




RNAV (GPS) RWY 31  
COURTLAND (9A4)

**▼** For uncompensated Baro-VNAV systems, LNAV/VNAV NA below -16°C (4°F) or above 40°C (104°F). DME/DME RNP-0.3 NA. When local altimeter setting not received, use Muscle Shoals altimeter setting and increase all DAs 38 feet and all MDAs 40 feet, increase LNAV/VNAV all Cats and LNAV Cats C/D visibility 1/8 SM and Circling Cat D 1/4 SM. VDP and Baro-VNAV NA with Muscle Shoals altimeter setting. Night landing: Rwy 18 NA.

MISSED APPROACH: Climb to 1200 then climbing right turn to 2700 direct DABIE and hold.

AWOS-3P <b>118.525</b>	HUNTSVILLE APP CON ★ <b>118.05 239.0</b>	UNICOM <b>122.7 (CTAF) 0</b>
---------------------------	---	---------------------------------



1200	2700	DABIE	4 NM Holding Pattern	
				
* LNAV only.				

SE-4, 07 AUG 2025 to 04 SEP 2025

SE-4, 07 AUG 2025 to 04 SEP 2025