

WAAS CH 56231 W13A	APP CRS 133°	Rwy Idg TDZE 582 Apt Elev 588
----------------------------------------	------------------------	---------------------------------------------------

RNAV (GPS) RWY 13

COURTLAND (9A4)

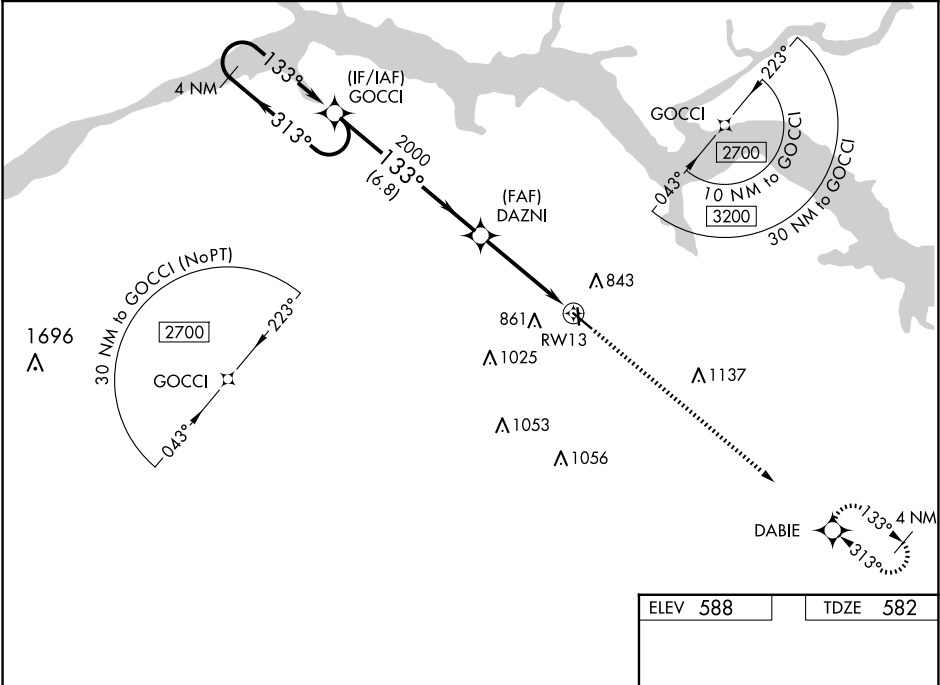
⚠

Baro-VNAV NA when using Muscle Shoals altimeter setting. For uncompensated Baro-VNAV systems, LNAV/VNAV NA below -16°C (4°F) or above 40°C (104°F). DME/DME RNP-0.3 NA. VDP NA with Muscle Shoals altimeter setting. When local altimeter setting not received, use Muscle Shoals altimeter setting and increase all DAs 38 feet and all MDAs 40 feet, increase LNAV/VNAV all Cats and LNAV Cats C/D visibility ½ SM and Circling Cat D ¼ SM. Night landing: Rwy 18 NA. Helicopter visibility reduction below ¾ SM NA.

⚠

MISSED APPROACH: Climb to 2700 direct DABIE and hold.

AWOS-3P 118.525	HUNTSVILLE APP CON ★ 118.05 239.0	UNICOM 122.7 (CTAF) 0
---------------------------	---------------------------------------------	---------------------------------



4 NM Holding Pattern		2700 DABIE	
GP 3.00° TCH 40		* LNAV only.	
GOCCI		DAZNI	
2700		2000	
313°		133°	
133°		2000	
6.8 NM		2.9 NM	
1.4 NM		RW13	
CATEGORY		A	
LPV DA		782-¾ 200 (200-¾)	
LNAV/VNAV DA		1074-1¾ 492 (500-1¾)	
LNAV MDA		1080-1 498 (500-1)	
CIRCLING		1160-1 1240-1 1260-2 1360-2½	
		572 (600-1) 652 (700-1) 672 (700-2) 772 (800-2½)	

