

WAAS
CH **45912**
W18A

APP CRS
180°

Rwy Ldg
TDZE
Apt Elev
5905
734
734

RNAV (GPS) RWY 18

MOUNT STERLING MUNI (I63)

RNP APCH - GPS.

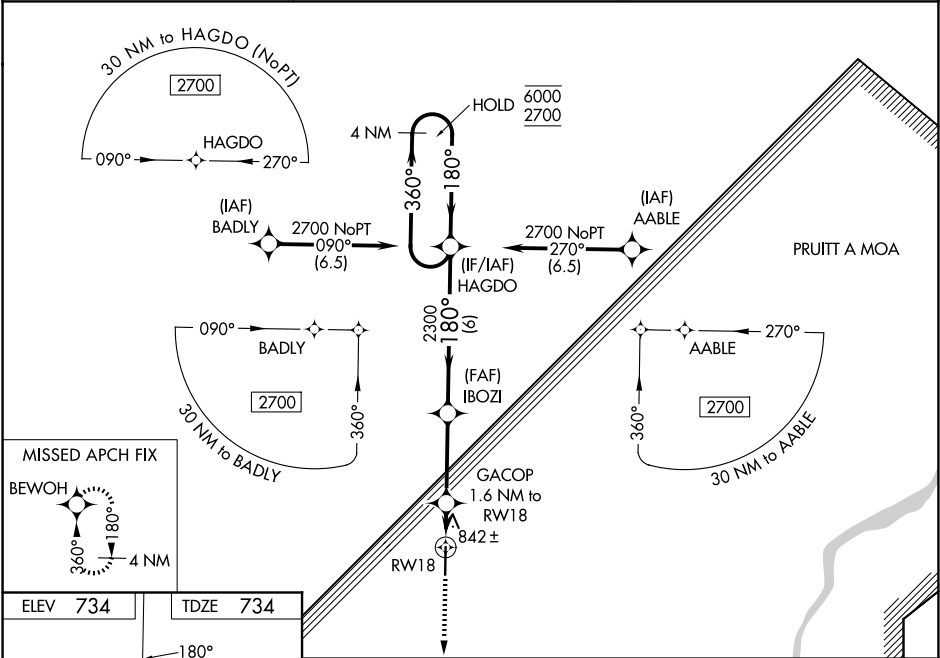
▼

▲

For uncompensated Baro-VNAV systems, LNAV/VNAV NA below -16°C or above 54°C. Baro-VNAV and VDP NA when using UIN altimeter setting. When local altimeter setting not received, use UIN altimeter setting and increase LPV DA to 1087 feet; increase LNAV/VNAV DA to 1146 feet and all visibilities ½ SM; increase all MDAs 60 feet and LNAV visibility Cat C/D ¼ SM, and Circling visibility Cat C/D ¼ SM.

MISSED APPROACH: Climb to 2700 direct BEWOH and hold.

AWOS-3PT 118.325	KANSAS CITY CENTER 126.225 317.775	UNICOM 122.8 (CTAF) 0
----------------------------	--	---------------------------------



ELEV **734**

TDZE **734**

180°

81

5905 x 7.5

0.3% UP

36

2700 BEWOH

GACOP 1.6 NM to RW18

1 NM to RW18

0.6

3.2 NM

6 NM

1260

2300

IBOZI 2300

HAGDO

4 NM Holding Pattern

360° → 6000

← 180° 2700

GP 3.00° TCH 43

CATEGORY	A	B	C	D
LPV DA		1041-1	307 (400-1)	
LNAV/VNAV DA		1100-1	366 (400-1)	
LNAV MDA		1100-1	366 (400-1)	
CIRCLING	1160-1 426 (500-1)	1200-1 466 (500-1)	1360-1¾ 626 (700-1¾)	1360-2 626 (700-2)