

APP CRS  
341°

Rwy Ldg  
TDZE  
377

Apt Elev  
378

RNAV (GPS) RWY 34

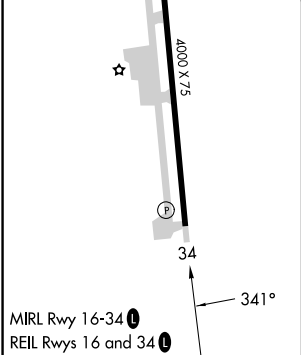
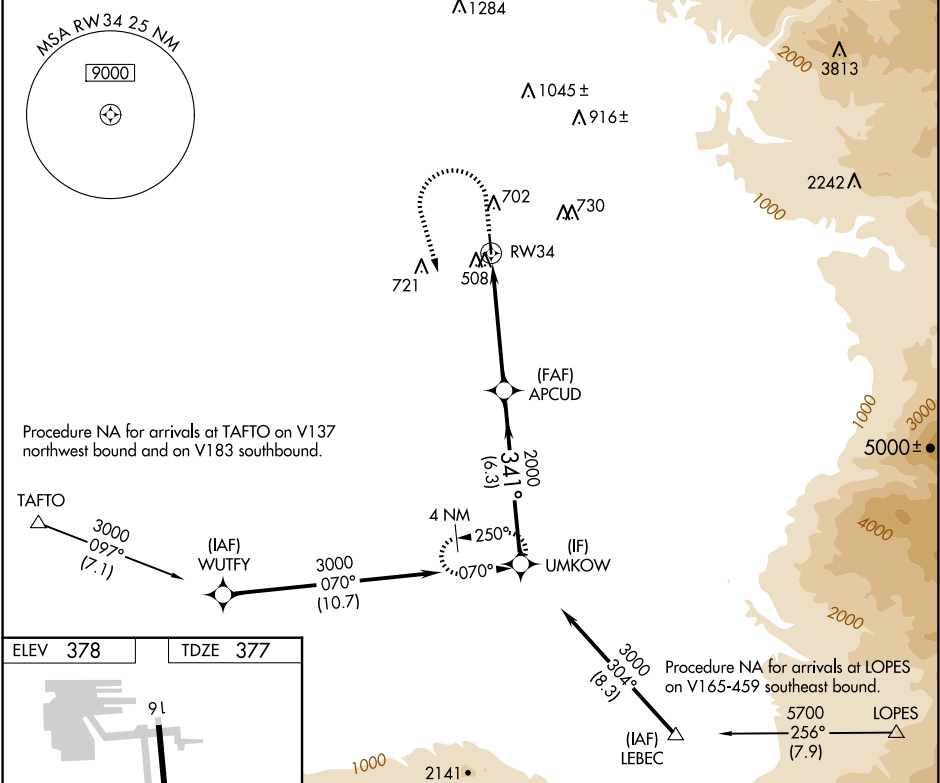
BAKERSFIELD MUNI (L45)

NA

DME/DME RNP-0.3 NA. Use Meadows Fld altimeter setting. When Meadows Fld altimeter setting not received, use Porterville altimeter setting and increase all MDA 80 feet, increase LNAV and Circling Cat C and D visibility ¼ mile. Helicopter visibility reduction below ¾ SM NA. Night Landing Rwy 16 NA.

MISSED APPROACH: Climb to 1200 then climbing left turn to 3000 direct UMKOW and hold.

BFL ASOS 118.6	BAKERSFIELD APP CON ★ 126.45 270.3	UNICOM 122.8 (CTAF) 0
-------------------	---------------------------------------	--------------------------



		Visual Segment - Obstacles.		UMKOW
1200		3000	UMKOW	UMKOW
APCUD		3000		
RW34		2000		
4.9 NM		6.3 NM		
CATEGORY	A	B	C	D
LNAV MDA	840-1	463 (500-1)	840-1 $\frac{3}{8}$	463 (500-1 $\frac{3}{8}$ )
CIRCLING	1060-1	682 (700-1)	1120-2 $\frac{1}{4}$ 742 (800-2 $\frac{1}{4}$ )	1120-2 $\frac{1}{2}$ 742 (800-2 $\frac{1}{2}$ )