

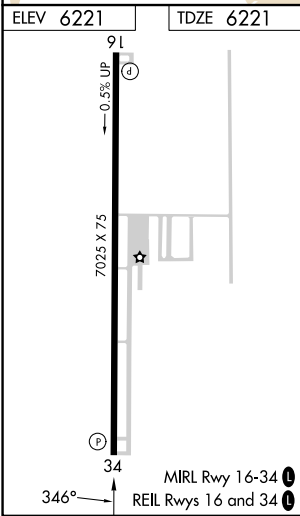
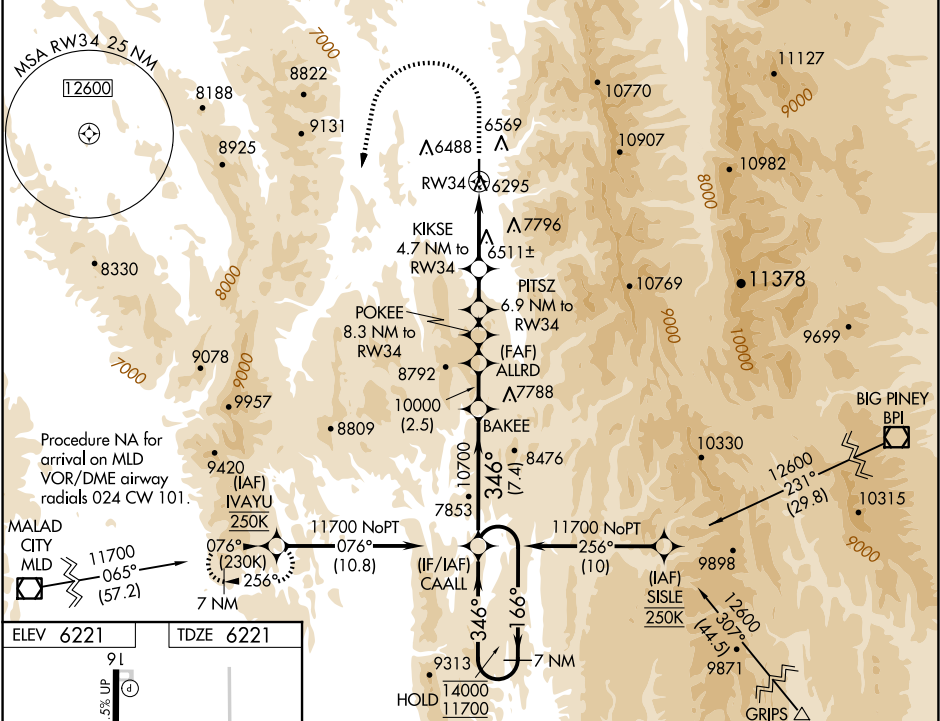
APP CRS	Rwy Idg	7025
346°	TDZE	6221
	Apt Elev	6221

RNAV (GPS) RWY 34

AFTON LINCOLN COUNTY/GENERAL BOYD L EDDINS FLD (AFO)

RNP APCH - GPS.	MISSED APPROACH: (Do not exceed 200K until IVAYU) Climb to 8080 then climbing left turn to 11700 direct IVAYU and hold.
Circling NA east of Rwy 16-34. Procedure NA at night.	*Missed approach requires minimum climb of 364 feet per NM to 8900.
Rwy 34 helicopter visibility reduction below 1 SM NA.	
-18°C When Afton altimeter setting not received, procedure NA.	

AWOS-3P 119.025	SALT LAKE CENTER 128.35 239.25	UNICOM 122.8 (CTAF) 1
---------------------------	--	---------------------------------



VGSI and descent angles not coincident (VGSI Angle 3.50/TCH 52).				
7 NM Holding Pattern				
14000 166° 11700 346° 10700 346° 10000 346° 9420 346° 8900 346° 8060 346°				
7.4 NM 2.5 NM 1.5 NM 1.4 NM 2.2 NM 4.7 NM				
CATEGORY	A	B	C	D
INAV MDA*	7520-1¼ 1299 (1300-1¼)	7520-1½ 1299 (1300-1½)	7520-3 1299 (1300-3)	NA
INAV MDA	7800-1¼ 1579 (1600-1¼)	7800-1½ 1579 (1600-1½)	7800-3 1579 (1600-3)	NA
CIRCLING	7800-1¼ 1579 (1600-1¼)	7800-1½ 1579 (1600-1½)	7800-3 1579 (1600-3)	NA

NW-1, 07 AUG 2025 to 04 SEP 2025

NW-1, 07 AUG 2025 to 04 SEP 2025