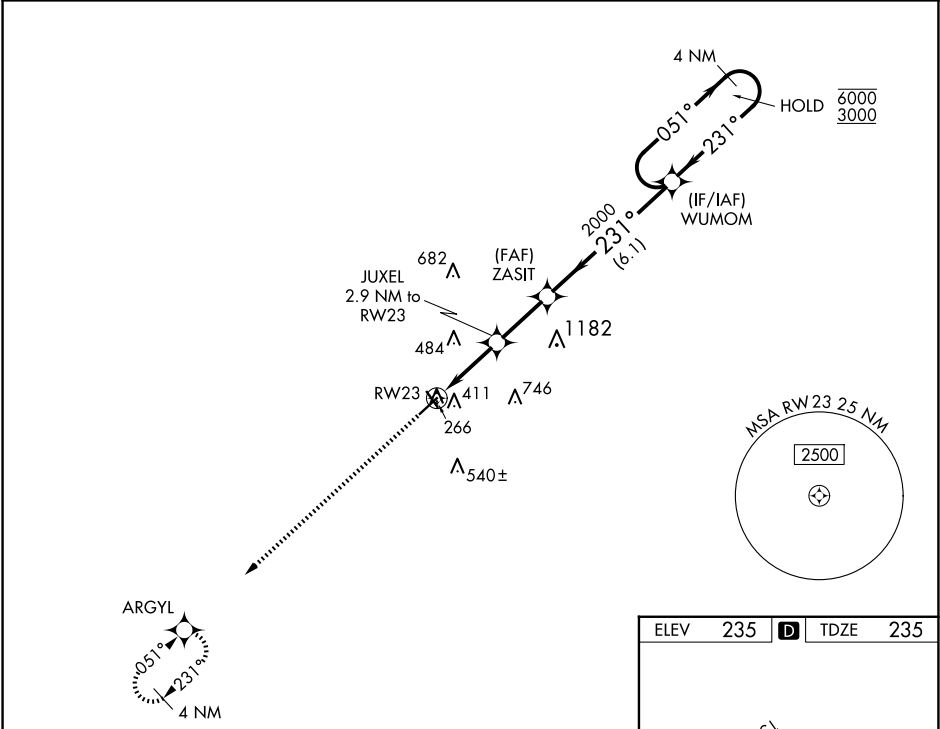


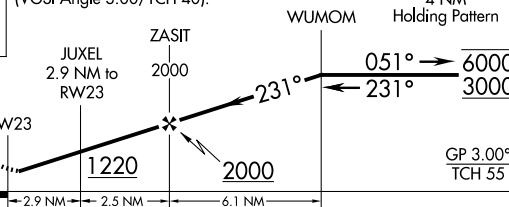


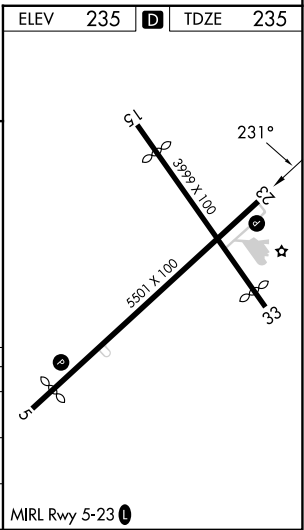
WAAS CH 81833 W23A	APP CRS 231°	Rwy Idg 5501 TDZE 235 Apt Elev 235
--	------------------------	---

RNAV (GPS) RWY 23
COOK COUNTY (15J)

RNP APCH - GPS.		MISSED APPROACH: Climb to 3000 direct ARGYL and hold, continue climb-in-hold to 3000.
AWOS-3PT 118.025	VALDOSTA APP CON★ 126.6 285.6	UNICOM 122.8 (CTAF) 0



3000	ARGYL	VGSi and RNAV glidepath not coincident (VGSi Angle 3.00/TCH 40).			
					
CATEGORY		A	B	C	D
LPV DA	595-1 360 (400-1)				
LNAV/VNAV DA	694-1 ³ / ₈ 459 (500-1 ³ / ₈)				
LNAV MDA	700-1	465 (500-1)	700-1 ³ / ₈ 465 (500-1 ³ / ₈)		



SE-4, 07 AUG 2025 to 04 SEP 2025

SE-4, 07 AUG 2025 to 04 SEP 2025