

BURLINGTON, KANSAS

AL-9111 (FAA)

25163

WAAS CH 40222 W36A	APP CRS 355°	Rwy Ldg 5500 THRE 1174 Apt Elev 1174
--	------------------------	---

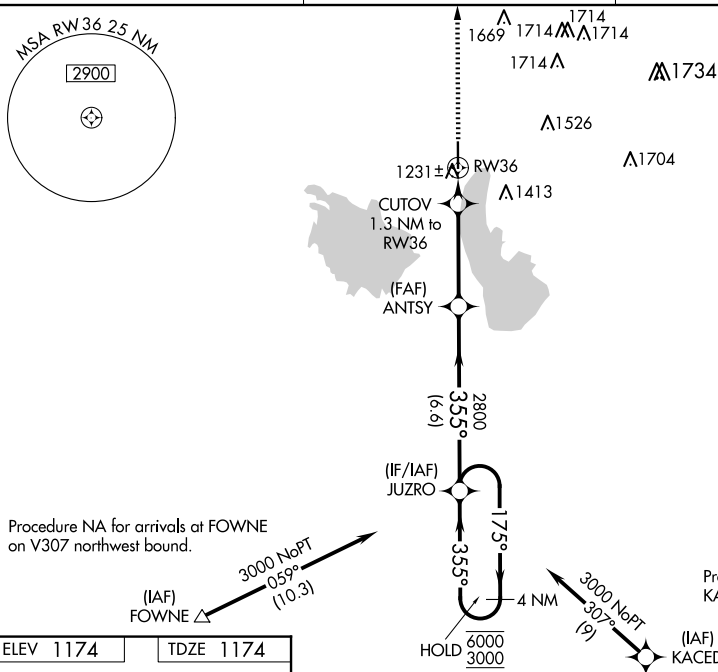
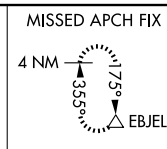
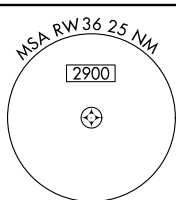
RNAV (GPS) RWY 36
COFFEY COUNTY (UKL)

RNP APCH-GPS.

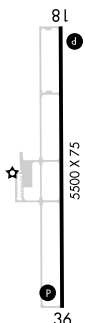
T For uncompensated Baro-VNAV systems, LNAV/VNAV
A NA below -17°C or above 54°C.

MISSED APPROACH: Climb to 3000 direct EBJEL and hold.

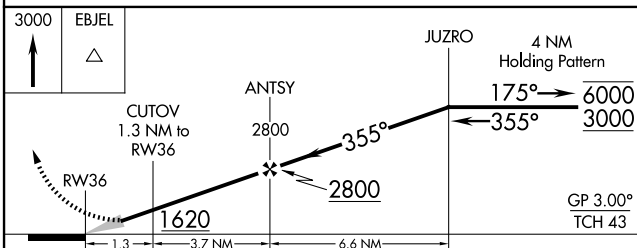
AWOS-3PT 121.125	KANSAS CITY CENTER 127.725 270.25	UNICOM 123.0 (CTAF) 0
----------------------------	---	--




ELEV 1174		TDZE 1174
-----------	--	-----------



REIL Rwy 18 and 36 ← 355°



CATEGORY		A	B	C	D
LPV	DA	1424-1	250 (300-1)		NA
LNAB/ VNAV	DA	1424-1	250 (300-1)		NA
LNAB	MDA	1500-1	326 (400-1)		NA
 CIRCLING		1580-1 406 (500-1)	1640-1 466 (500-1)	1920-2¼ 746 (800-2¼)	NA

BURLINGTON, KANSAS

Amdt 1 07OCT21

COFFEY COUNTY (UKL)

38°18'N-95°43'W

RNAV (GPS) RWY 36

NC-2, 07 AUG 2025 to 04 SEP 2025

NC-2, 07 AUG 2025 to 04 SEP 2025