

VORTAC TYI

117.8

Chan 125

APP CRS

291°

Rwy Idg

3999

TDZE

50

Apt Elev

53

VOR/DME or GPS RWY 27

TARBORO-EDGEcombe (ETC)

▼

Use Rocky Mount altimeter setting; when not received

▲

NA use Raleigh-Durham altimeter setting minimums.

MISSED APPROACH: Climb to 2000

direct TYI VORTAC and hold.

AWOS-3P

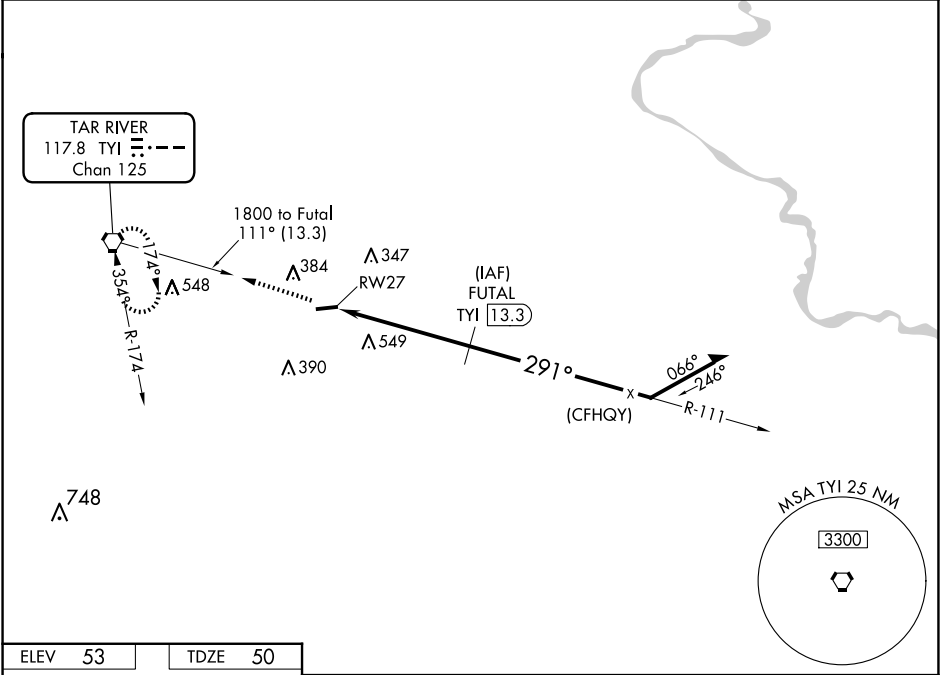
119.575

WASHINGTON CENTER

123.85 279.65

CTAF

122.9 0



ELEV 53

TDZE 50

2000

TYI

RW27

TYI 8.3

FUTAL

TYI 13.3

1800

291°

111°

1800

3999 X 60

291° 5 NM from FAF

REIL Rwy 27 0

MIRL Rwy 9-27 0

CATEGORY	A	B	C	D
S-27	860-1 810 (900-1)	860-1¼ 810 (900-1¼)	860-2¼ 810 (900-2¼)	860-2½ 810 (900-2½)
CIRCLING	860-1 807 (900-1)	860-1¼ 807 (900-1¼)	860-2¼ 807 (900-2¼)	920-2¾ 867 (900-2¾)
RALEIGH-DURHAM ALTIMETER SETTING MINIMUMS				
S-27	1080-1¼ 1030 (1100-1¼)	1080-1½ 1030 (1100-1½)	1080-3	1030 (1100-3)
CIRCLING	1080-1¼ 1027 (1100-1¼)	1080-1½ 1027 (1100-1½)	1080-3	1140-3 1087 (1100-3)