

WAAS CH <b>57938</b> <b>W35A</b>	APP CRS <b>346°</b>	Rwy Idg TDZE <b>538</b> Apt Elev <b>538</b>
----------------------------------------	------------------------	---------------------------------------------------

RNAV (GPS) RWY 35

PIERCE COUNTY/THUN FLD (PLU)

RNP APCH - GPS.

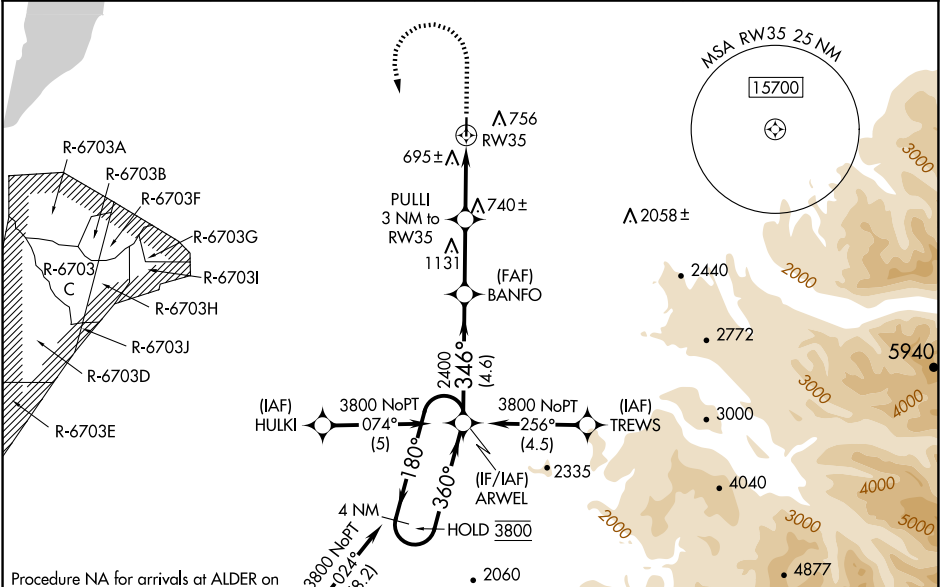
▼

⚠

For uncompensated Baro-VNAV systems, LNAV/VNAV NA below -16°C or above 54°C. Baro-VNAV and VDP NA when using TCM altimeter setting. Rwy 35 helicopter visibility reduction below ¾ SM NA. When local altimeter setting not received, use TCM altimeter setting and increase LPV DA to 960 feet and all visibilities ¼ SM; increase LNAV/VNAV DA to 1049 feet; increase all MDAs 60 feet.

MISSED APPROACH: Climb to 2000 then climbing left turn to 3800 direct ARWEL and hold.

AWOS-3 <b>128.575</b>	SEATTLE APP CON <b>126.5 377.15</b>	CLNC DEL <b>121.85</b>	UNICOM <b>122.7 (CTAF) 1</b>
--------------------------	----------------------------------------	---------------------------	---------------------------------



ELEV 538 | TDZE 538

REIL Rws 17 and 35 1

MIRL Rwy 17-35 1

346°

CATEGORY	A	B	C	D
LPV DA	911-1	373 (400-1)	NA	
LNAV/VNAV DA	1000-1 3/8	462 (500-1 3/8)	NA	
LNAV MDA	1000-1	462 (500-1)	NA	
CIRCLING	1080-1	542 (600-1)	NA	

4 NM Holding Pattern

GP 3.00° TCH 53

VGSI and RNAV glidepath not coincident (VGSI Angle 4.00/TCH 53).

ARWEL

BANFO

PULLI 3 NM to RW35

1 NM to RW35

RW35

346°

180°

360°

346°

2400

1540

4.6 NM

2.7 NM

2 NM

1 NM

35

346°