

APP CRS	Rwy Idg	<b>6101</b>
<b>183°</b>	TDZE	<b>2211</b>
	Apt Elev	<b>2211</b>

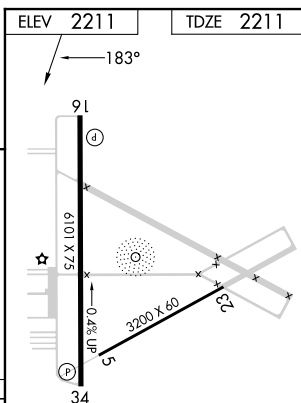
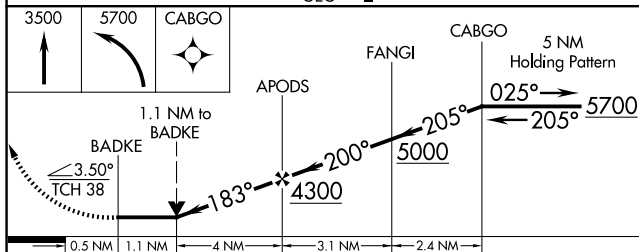
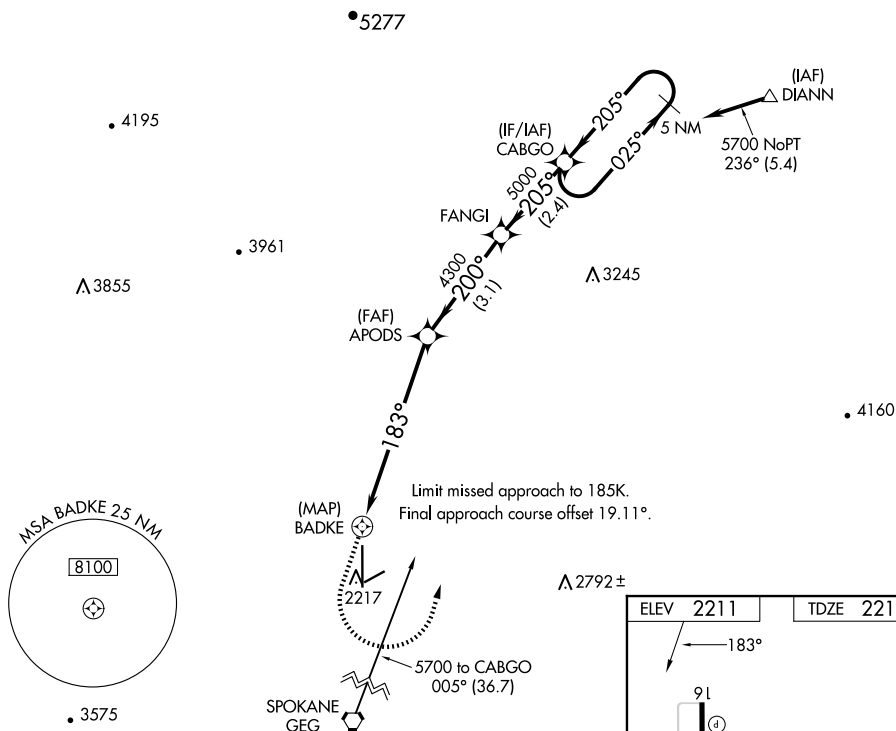
RNAV (GPS) RWY 16  
DEER PARK (DEW)

**T** When local altimeter setting not received, procedure NA.  
DME/DME RNP-0.3 NA.  
Helicopter visibility reduction below  $\frac{3}{4}$  SM NA.  
Circling NA west of Rwy 16-34.

**MISSED APPROACH:** Climb to 3500 then climbing left turn to 5700 direct CABGO and hold.

ASOS  
135.175

SPOKANE APP CON  
123.75 282.25

UNICOM  
123.0 (CTAF) **L**

CATEGORY	A	B	C	D
LNAV MDA	2640-1	429 (500-1)	2640-1¼	429 (500-1¼)
<b>C</b> CIRCLING	2700-1	489 (500-1)	2700-1½ 489 (500-1½)	2860-2 649 (700-2)

REIL Rwy 16 and 34 L

MIRL Rwy 16-34 **L**