

WAAS CH 49110 W32A	APP CRS 317°	Rwy Ldg 8000 TDZE 783 Apt Elev 783
--	------------------------	---

RNAV (GPS) RWY 32
LAKE HAVASU CITY (HII)

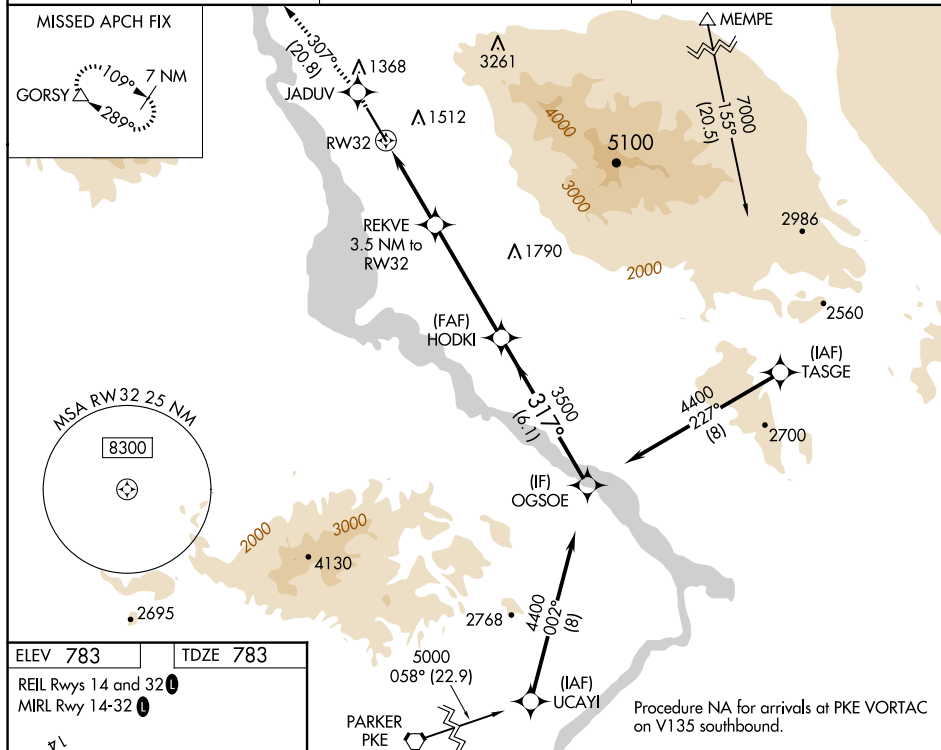
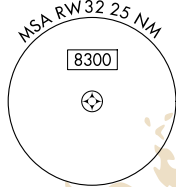
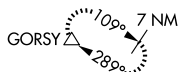
RNP APCH.

T	Circling NA northeast of Rwy 14-32.
A	Rwy 32 helicopter visibility reduction below $\frac{3}{4}$ SM NA.

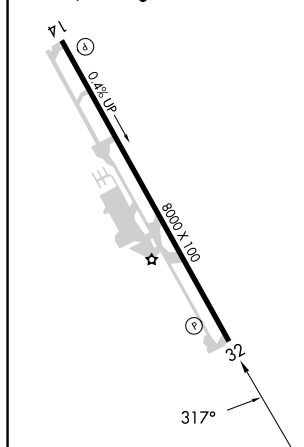
MISSED APPROACH: Climb to 6300 direct JADUV and track 307° to GORSY and hold, continue climb-in-hold to 6300.

AWOS-3 119.025	LOS ANGELES CENTER 134.65 360.65	UNICOM 122.7 (CTAF) ①
--------------------------	--	---------------------------------

MISSED APCH FIX



ELEV 783	TDZE 783
REIL Rwy 14 and 32	
MIRL Rwy 14-32	



6300 ↑	JADUV ✦	tr 307°	VGS1 and RNAV glidepath not coincident [VGS1 Angle 3.00/TCH 36].			
*LNAV only.		REKVE 3.5 NM to RW32	HODKI 3500	OGSOE 4400		
RW32		*2.6 NM to RW32	3500	317°		
2.6 NM		0.9	4.7 NM	6.1 NM		
1940*				GP 3.00° TCH 50		
CATEGORY	A	B	C	D		
LPV DA	1265-1 $\frac{3}{8}$ 482 (500-1 $\frac{3}{8}$)					
LNAV MDA	1660-1 877 (900-1)	1660-1 $\frac{1}{4}$ 877 (900-1 $\frac{1}{4}$)	1660-2 $\frac{1}{2}$	877 (900-2 $\frac{1}{2}$)		
CIRCLING	1660-1 $\frac{1}{4}$	877 (900-1 $\frac{1}{4}$)	1800-3 1017 (1100-3)	2180-3 1397 (1400-3)		