

WAAS
CH **53330**
W14A

APP CRS
134°

Rwy Ldg
TDZE **759**
Apt Elev **783**

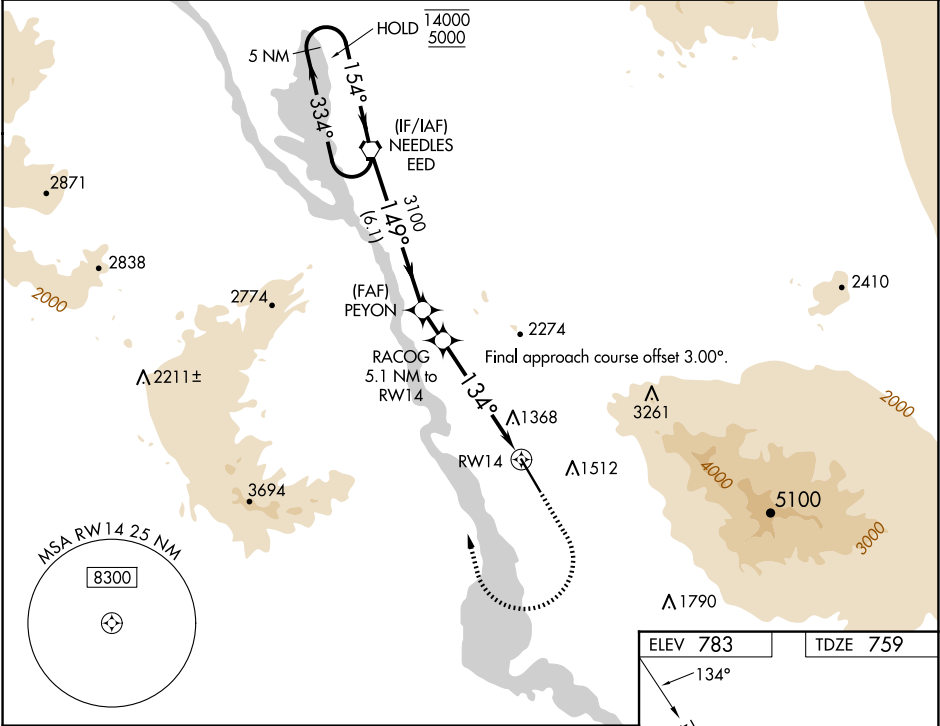
RNAV (GPS) RWY 14

LAKE HAVASU CITY (HII)

RNP APCH.
Circling NA northeast of Rwy 14-32.
Rwy 14 helicopter visibility reduction below ¾ SM NA.

MISSED APPROACH: (Do not exceed 240K until EED VORTAC)
Climb to 2600 then climbing right turn to 6000 direct EED
VORTAC and hold, continue climb-in-hold to 6000.

AWOS-3 119.025	LOS ANGELES CENTER 134.65 360.65	UNICOM 122.7 (CTAF) 0
--------------------------	--	---------------------------------



5 NM Holding Pattern

EED VORTAC

PEYON

RACOG 5.1 NM to RWY 14

2600 6000 EED

↑ ↻ ⬡

*LP only

14000 ← 334°

5000 ← 154°

149°

3100

3.40° TCH 40

134°

2620

*3.6 NM to RWY 14

RWY 14

6.1 NM 1.3 NM 1.5 NM 3.6 NM

CATEGORY	A	B	C	D
LP MDA	2140-1¼ 1381 (1400-1¼)	2140-1½ 1381 (1400-1½)	2140-3	1381 (1400-3)
LPNAV MDA	2320-1¼ 1561 (1600-1¼)	2320-1½ 1561 (1600-1½)	2320-3	1561 (1600-3)
CIRCLING	2320-1¼ 1537 (1600-1¼)	2320-1½ 1537 (1600-1½)	2320-3	1537 (1600-3)

ELEV 783 TDZE 759

134°

0.68 UP

8000 X 100

32

REIL Rwy 14 and 32 0

MIRL Rwy 14-32 0