

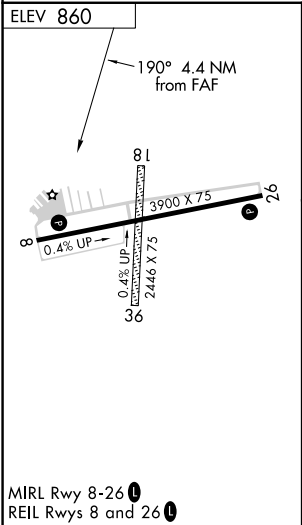
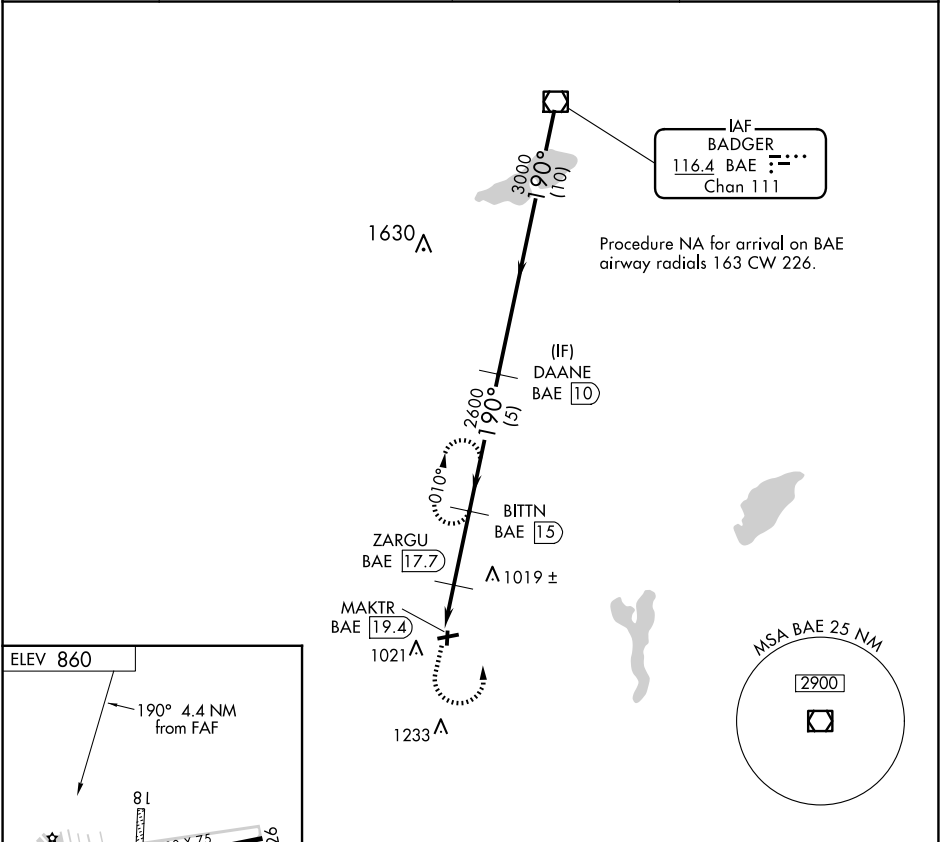
VOR/DME BAE	APP CRS	Rwy Idg	N/A
<b>116.4</b>	<b>190°</b>	TDZE	N/A
Chan <b>111</b>		Apt Elev	<b>860</b>

VOR/DME-A

EAST TROY MUNI (57C)

<div><div>▼</div><div>Circling NA to Rwy 18 and 36.</div></div>	MISSED APPROACH: Climb to 2700 then left turn on BAE VOR/DME R-190 to BITTN/15 DME and hold.
---	--

AWOS-3PT <b>118.125</b>	MILWAUKEE APP CON <b>125.35 307.0</b>	GCO <b>121.725</b>	UNICOM <b>123.0</b> (CTAF) <b>0</b>
----------------------------	--	-----------------------	--



2700	BAE R-190	BITTN BAE 15	DAANE BAE 10	BAE VOR/DME
MAKTR BAE 19.4	ZARGU BAE 17.7	BITTN BAE 15	3000	190°
1800	2600	3000	3000	
1.7 NM	2.7 NM	5 NM	10 NM	
CATEGORY	A	B	C	D
CIRCLING	1340-1	480 (500-1)	NA	

EC-3, 07 AUG 2025 to 04 SEP 2025

EC-3, 07 AUG 2025 to 04 SEP 2025