

WAAS CH 73023 W26A	APP CRS 261°	Rwy Idg 3900 TDZE 860 Apt Elev 860
--	------------------------	---

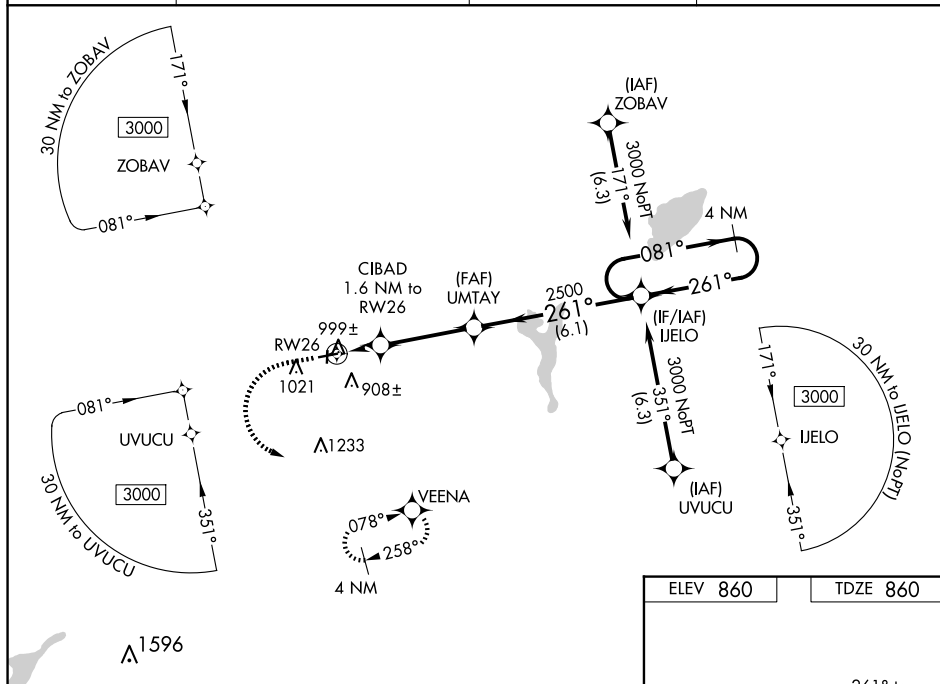
RNAV (GPS) RWY 26
EAST TROY MUNI (57C)

RNP APCH.

T For uncompensated Baro-VNAV systems, LNAV/VNAV NA below -16°C (4°F) or above 54°C (130°F). Obtain local altimeter setting on CTAF; when not received, use General Mitchell Intl altimeter setting and increase all DA 72 feet and all MDA 80 feet, increase LNAV/VNAV visibility all Cats ¼ mile. Rwy 26 helicopter visibility reduction below ¾ SM NA. Baro-VNAV and VDP NA when using General Mitchell Intl altimeter setting.

MISSED APPROACH: Climb to 1800 then climbing left turn to 3000 direct VEENA and hold.

AWOS-3PT 118.125	MILWAUKEE APP CON 125.35 307.0	GCO 121.725	UNICOM 123.0 (CTAF) 0
----------------------------	--	-----------------------	---------------------------------



VGS1 and RNAV glidepath not coincident
(VGS1 Angle 3.00/TCH 40).

4 NM Holding Pattern

UMTAY 2500

IJELO Holding Pattern

081° → 3000

← 261°

CIBAD 1.6 NM to RW26

*LNAV only

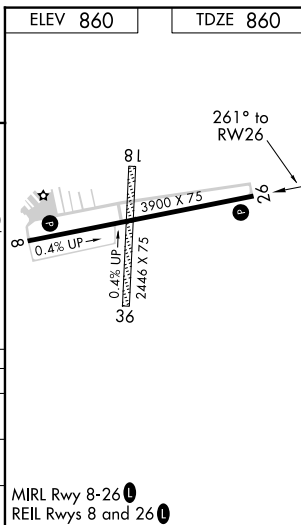
RW26

*1.1 NM to RW26

1400*

GP 3.00° TCH 45

CATEGORY	A	B	C	D
LPV DA	1110-1	250 (300-1)		NA
LNAV/VNAV DA	1161-1	301 (400-1)		NA
LNAV MDA	1260-1	400 (500-1)		NA



RNAV (GPS) RWY 26