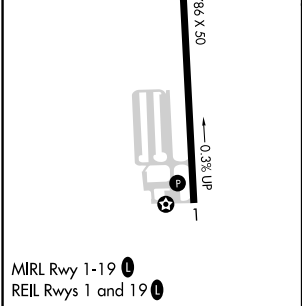
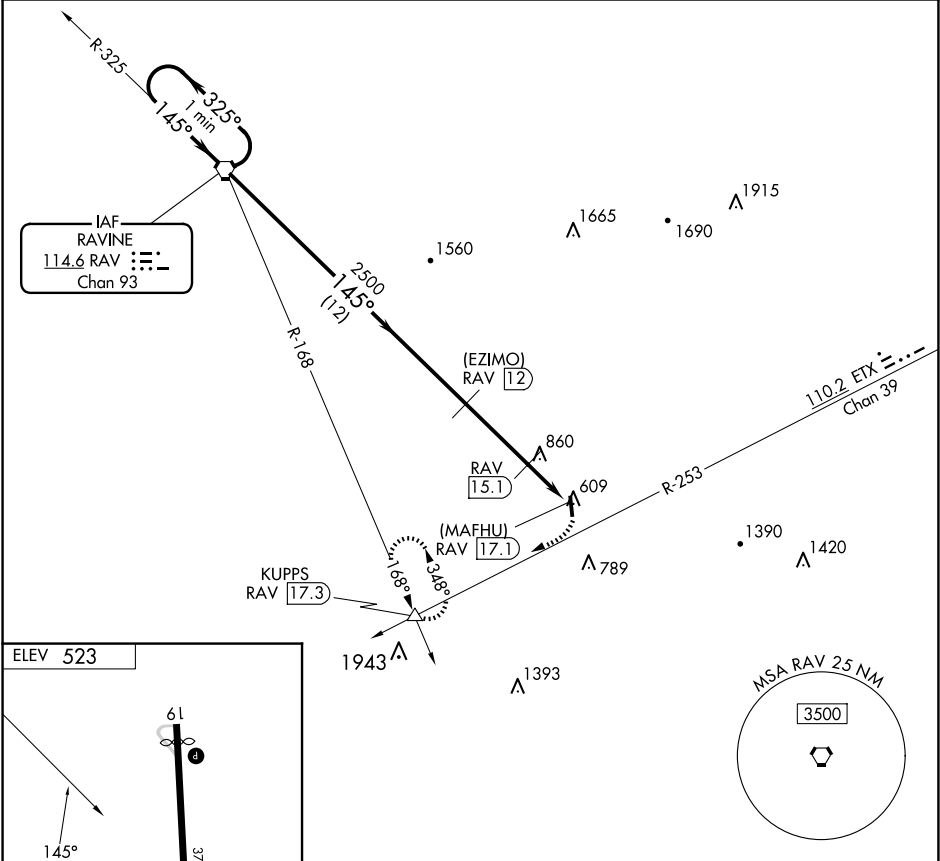


VORTAC RAV	APP CRS	Rwy Idg	N/A
114.6	145°	TDZE	N/A
Chan 93		Apt Elev	523

VOR/DME or GPS-A
DECK (9D4)

<div><div>V</div><div>▲ NA</div></div> <div>Use Harrisburg Intl, PA altimeter setting. If not received, procedure NA. Circling Rwy 1 NA at night.</div>	MISSED APPROACH: Climbing right turn to 3000, intercept the ETX VORTAC R-253 to KUPPS INT and hold.		
AWOS-2 118.45	RDG ASOS 127.1	HARRISBURG APP CON 118.25 269.45	UNICOM 122.8 (CTAF) 0



One Minute Holding Pattern		RAV VORTAC	(EZIMO) RAV 12	3000 ETX R-253	KUPPS ▲
3500		325°	145°	145°	1800
		12 NM	3.1 NM	2 NM	
CATEGORY	A	B	C	D	
CIRCLING	1140-1 617 (700-1)	1160-1 637 (700-1)	1160-1¾ 637 (700-1¾)	NA	

NE-4, 07 AUG 2025 to 04 SEP 2025

NE-4, 07 AUG 2025 to 04 SEP 2025