

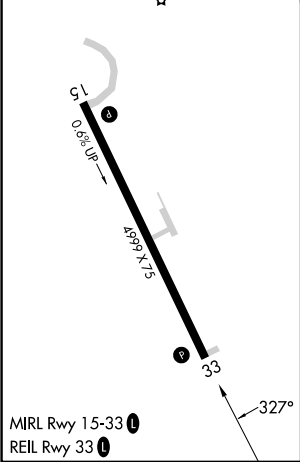
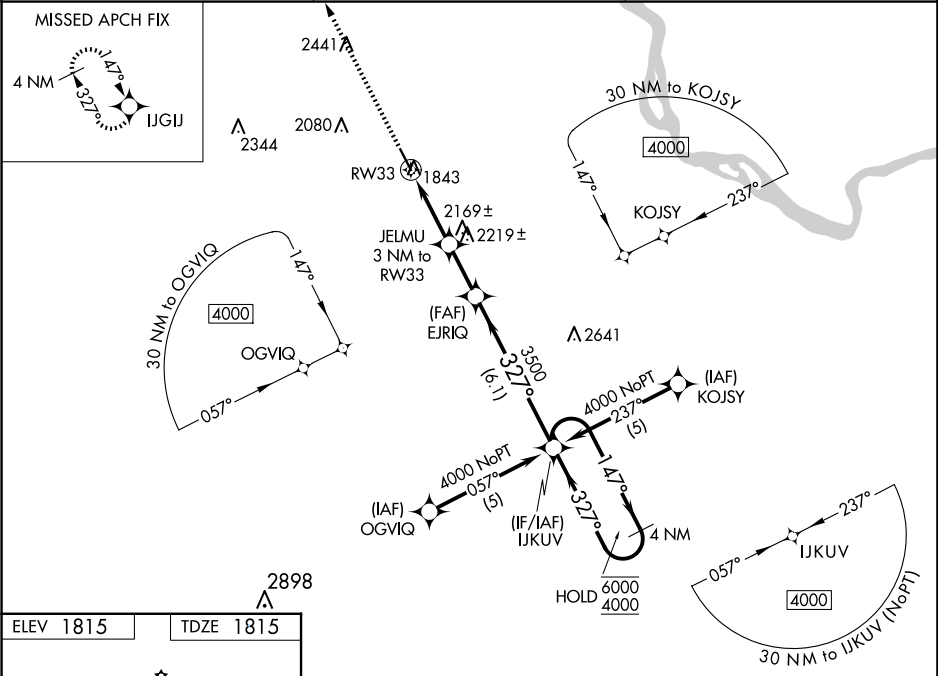
WAAS CH 53318 W33A	APP CRS 327°	Rwy Idg 4999 TDZE 1815 Apt Elev 1815
--	------------------------	---



RNAV (GPS) RWY 33

MERCER COUNTY RGNL (HZE')

RNP APCH - GPS.	MISSED APPROACH: Climb to 4000 direct IJGIJ and hold.
For uncompensated Baro-VNAV systems, LNAV/VNAV NA below -18°C or above 54°C.	

AWOS-3PT 118.675	MINNEAPOLIS CENTER 124.25 236.825	UNICOM 122.8 (CTAF)
----------------------------	---	-------------------------------



4000 ↑ IJGIJ		VGSi and RNAV glidepath not coincident (VGSi Angle 3.00/TCH 29).		
		IJKUV		
2 NM to RW33		4 NM Holding Pattern		
JELMU 3 NM to RW33		147° → 6000		
EJRIQ 3500		← 327° 4000		
2820		GP 3.04°		
3500		TCH 45		
2 NM		6.1 NM		
CATEGORY	A	B	C	D
LPV DA	2193-1 378 (400-1)			NA
LNAV/ VNAV DA	2353-1½ 538 (600-1½)			NA
LNAV MDA	2480-1 665 (700-1)	2480-1⅞ 665 (700-1⅞)		NA
 CIRCLING	2480-1 665 (700-1)	2480-1⅞ 665 (700-1⅞)		NA