

TBARR FOUR ARRIVAL (RNAV) Arrival Routes

AL-9077 (FAA)

DENVER INTL (DEN)
DENVER, COLORADO

DENVER APP CON

120.35 379.3

D-ATIS ARR

125.6 379.9

DENVER TOWER

128.75 273.55 (Rwy 7-25)

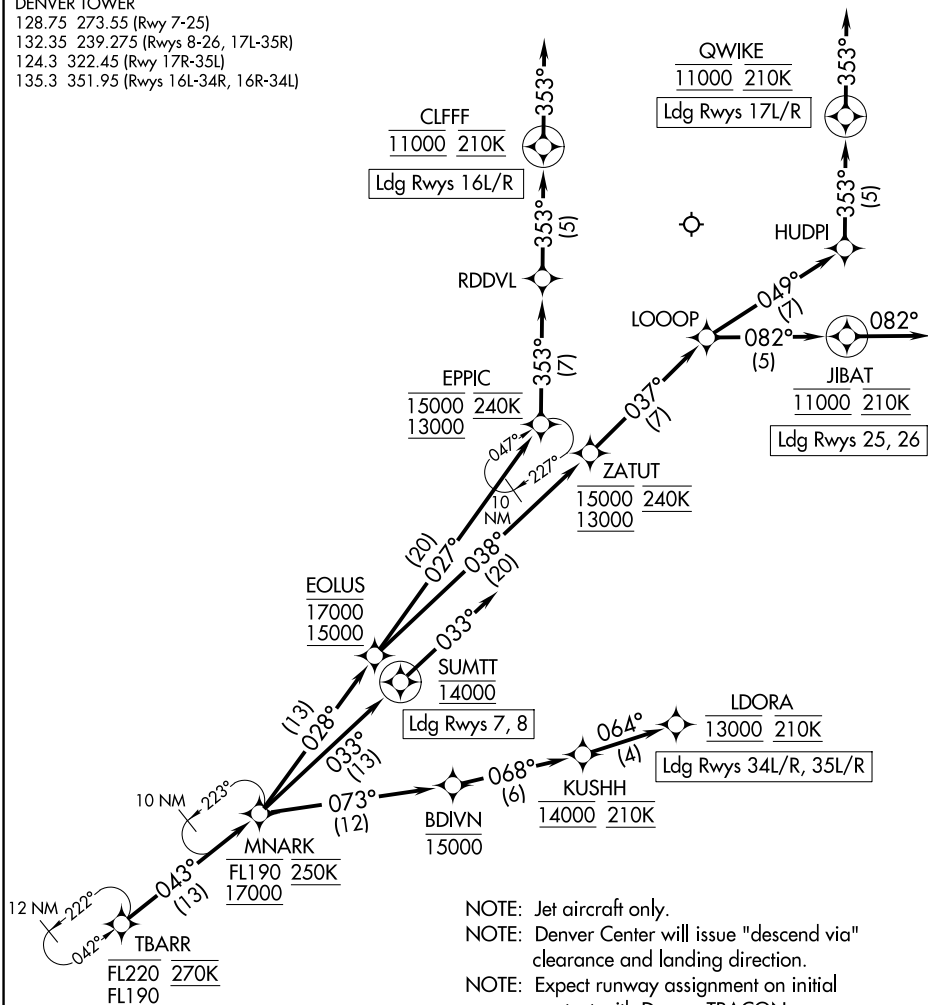
132.35 239.275 (Rwys 8-26, 17L-35R)

124.3 322.45 (Rwy 17R-35L)

135.3 351.95 (Rwys 16L-34R, 16R-34L)

RNAV 1 - DME/DME/IRU or GPS.

RADAR required.



NOTE: Jet aircraft only.

NOTE: Denver Center will issue "descend via" clearance and landing direction.

NOTE: Expect runway assignment on initial contact with Denver TRACON.

NOTE: SHNPS, BBRRO, NVVER, OLSNN, ZORKL, and LIFTE Transitions, ATC assigned only.

NOTE: Landing north select Rwy 35L Transition.

NOTE: Landing south select Rwy 16R Transition.

NOTE: Landing east select Rwy 7 Transition.

NOTE: Landing west select Rwy 26 Transition.

(CONTINUED ON FOLLOWING PAGE)

NOTE: Chart not to scale.

TBARR FOUR ARRIVAL (RNAV) Arrival Routes

DENVER, COLORADO
DENVER INTL (DEN)

(TBARR.TBARR4) 12JUN25

SW-1, 07 AUG 2025 to 04 SEP 2025

SW-1, 07 AUG 2025 to 04 SEP 2025