

WAAS CH 82228 W08A	APP CRS 082°	Rwy Ldg 12000 TDZE 5354 Apt Elev 5434
--	------------------------	--

RNAV (GPS) Y RWY 8
DENVER INTL (DEN)

▼ For uncompensated Baro-VNAV systems, LNAV/VNAV NA below -25°C (-13°F) or above 47°C (117°F). Simultaneous approach authorized with Rwy 7. DME/DME RNP-0.3 NA. LNAV procedure NA during simultaneous operations. Use of FD or AP providing RNAV track guidance required during simultaneous operations. For inoperative MALSR, increase LNAV Cat C/D visibility to RVR 5500. # RVR 1800 authorized with use of FD or AP or HUD to DA.

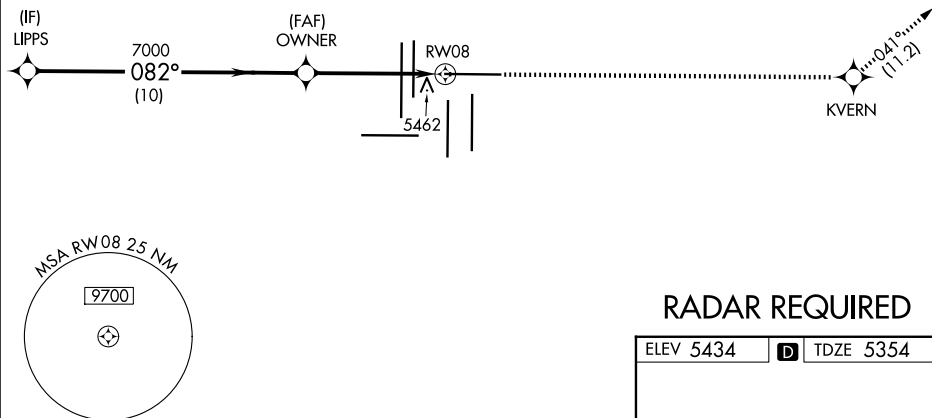
MALSR



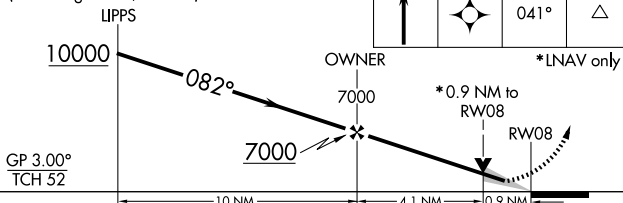
MISSED APPROACH: Climb to 10000 direct KVERN and on track 041° to WITNE and hold.

D-ATIS	DENVER APP CON	DENVER TOWER	GND CON	CLNC DEL	CPDLC
125.6 379.9 (ARR)	119.3 307.3 (N)	121.35 239.275	121.35 379.175 (W)	118.75	
134.025 (DEP)	120.35 379.3 (S)		121.85 377.1 (E)		

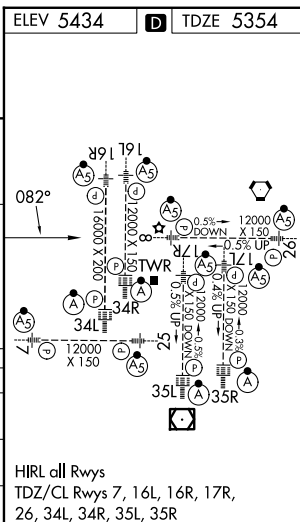
MISSED APCH FIX



VGSI and RNAV glidepath not coincident
(VGSI Angle 3.00/TCH 70).



CATEGORY	A	B	C	D
LPV DA #	5554/24 200 (200-½)			
RNAV/DA	5833/60 479 (400-1¼)			
RNAV MDA	5720/24 366 (300-½)		5720/35 366 (300-⅝)	



DENVER, COLORADO

Amdt 1C 07DEC17

39°52'N-104°40'W

DENVER INTL (DEN)

RNAV (GPS) Y RWY 8

SW-1, 07 AUG 2025 to 04 SEP 2025