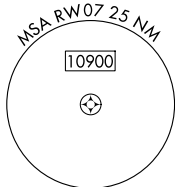
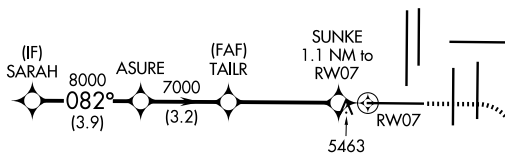


RNAV (GPS) Y RWY 7
DENVER INTL (DEN)

MISSED APPROACH: Climb to 5900 then climbing right turn to 10000 direct CIDMU and on track 081° to LIMEX and hold.

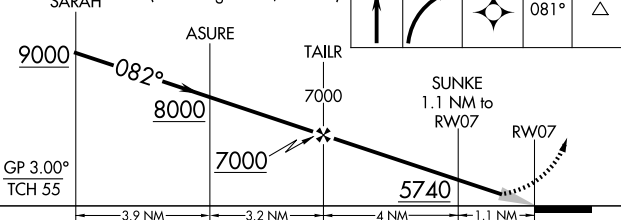
CPDLC



CIDMU 

ELEV 5434	D	TDZE 5352
-----------	----------	-----------

VGSI and RNAV glidepath not coincident
(VGSI Angle 3.00/TCH 68).



HIRL all Rwys
TDZ/CL Rwys 7, 16L, 16R, 17R,
26, 34L, 34R, 35L, 35R