

WAAS CH 45719 W35B	APP CRS 353°	Rwy Ldg 12000 TDZE 5370 Apt Elev 5434
--	------------------------	--

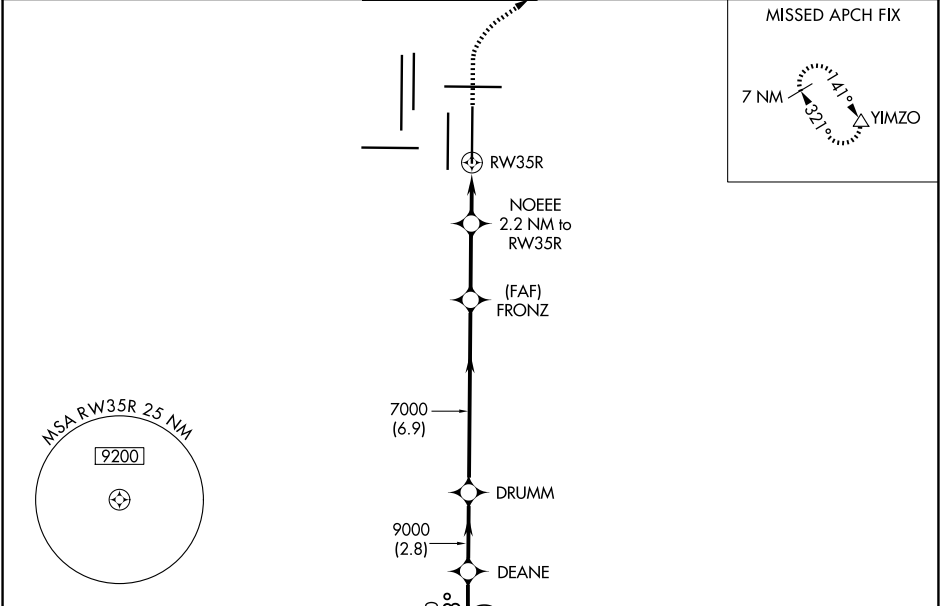
RNAV (GPS) Y RWY 35R
DENVER INTL (DEN)

▼ For uncompensated Baro-VNAV systems, LNAV/VNAV NA below -25°C (-13°F) or above 45°C (114°F). DME/DME RNP-0.3 NA. For inoperative ALSF, increase LNAV/VNAV visibility all Cats to RVR 4000. LNAV procedure NA during simultaneous operations. Simultaneous approach authorized with Rwy 34L, Rwy 34R, and Rwy 35L. Use of FD or AP providing RNAV track guidance required during simultaneous operations.

ALSF-2

MISSED APPROACH: Climb to 5900 then climbing right turn to 8000 direct YIMZO and hold.

D-ATIS 125.6 379.9 (ARR) 134.025 (DEP)	DENVER APP CON 119.3 307.3 (N) 120.35 379.3 (S)	DENVER TOWER 132.35 239.275	GND CON 121.35 379.175 (W) 121.85 377.1 (E)	CLNC DEL 118.75	CPDLC
--	---	---------------------------------------	---	---------------------------	-------



ELEV 5434 **D** TDZE 5370

HIRL all Rwys
TDZ/CL Rwys 7, 16L, 16R, 17R,
26, 34L, 34R, 35L, 35R

<p>(IF) DORRY</p>				VGSI and RNAV glidepath not coincident (VGSI Angle 3.00/TCH 66).				5900		8000		YIMZO	
DORRY				DEANE		DRUMM		FRONZ		NOEE		*LNAV only.	
9000				353°		9000		353°		7000		2.2 NM to RW35R	
GP 3.00° TCH 59				3.2 NM		2.8 NM		6.9 NM		2.7 NM		1.1 NM	
CATEGORY				A		B		C		D			
LPV DA		5570/18 200 (200-½)											
LNAV/ VNAV DA		5620/24 250 (200-½)											
LNAV MDA		5800/24 430 (400-½)											
		5800/40 430 (400-¾)											

SW-1, 07 AUG 2025 to 04 SEP 2025

SW-1, 07 AUG 2025 to 04 SEP 2025