

WAAS CH <b>90318</b> <b>W34B</b>	APP CRS <b>353°</b>	Rwy Ldg <b>12000</b> TDZE <b>5354</b> Apt Elev <b>5434</b>
--	------------------------	--

# RNAV (GPS) Y RWY 34R

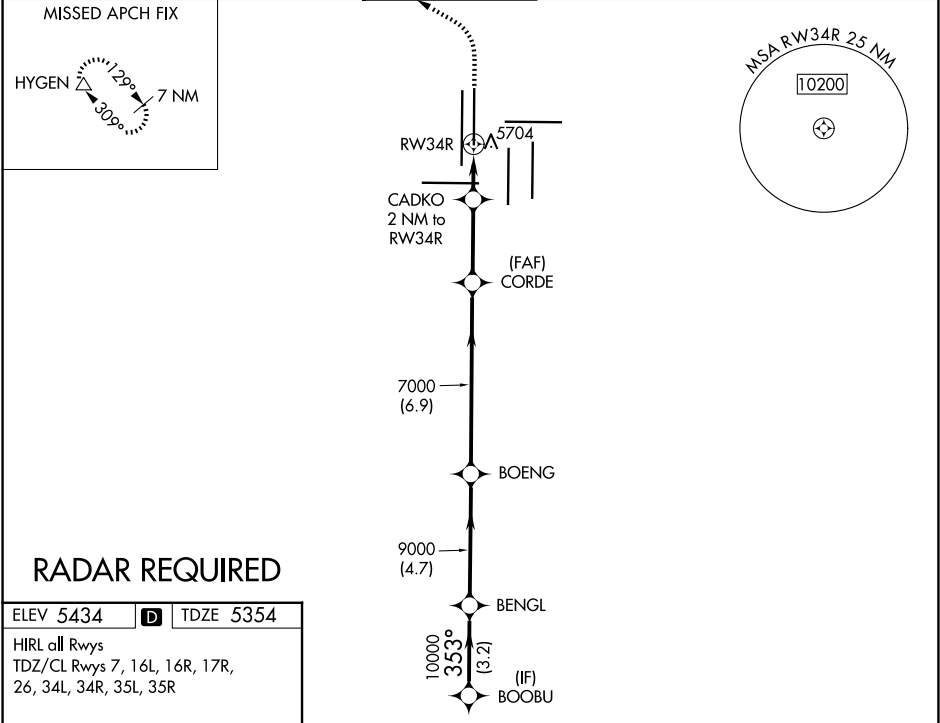
DENVER INTL (DEN)

⚠ For uncompensated Baro-VNAV systems, LNAV/VNAV NA below -25°C (-13°F) or above 46°C (114°F). DME/DME RNP-0.3 NA. LNAV procedure NA during simultaneous operations. Simultaneous approach authorized with Rwy 35L/R. Use of FD or AP providing RNAV track guidance required during simultaneous operations.

ALSF-2

MISSED APPROACH: Climb to 6000 then climbing left turn to 10000 direct HYGEM and hold.

D-ATIS <b>125.6 379.9 (ARR)</b> <b>134.025 (DEP)</b>	DENVER APP CON <b>119.3 307.3 (N)</b> <b>120.35 379.3 (S)</b>	DENVER TOWER <b>135.3 351.95</b>	GND CON <b>121.35 379.175 (W)</b> <b>121.85 377.1 (E)</b>	CLNC DEL <b>118.75</b>	CPDLC
--	---	-------------------------------------	---	---------------------------	-------



ELEV 5434 **D** TDZE 5354

HIRL all Rwys  
TDZ/CL Rwys 7, 16L, 16R, 17R, 26, 34L, 34R, 35L, 35R

VGSI and RNAV glidepath not coincident (VGSI Angle 3.00/TCH 63).

	6000	10000	HYGEM
	↑	↖	△
	*LNAV only		
	CADKO 2 NM to RW34R		
	RW34R		
	GP 3.00° TCH 59		
	3.2 NM 4.7 NM 6.9 NM 3 NM 2 NM		
CATEGORY	A B C D		
LPV DA	5554/18 200 (200-½)		
LNAV/VNAV DA	5838/60 484 (500-1¼)		
LNAV MDA	5940/24 586 (600-½)		5940-1¼ 586 (600-1¼)

SW-1, 07 AUG 2025 to 04 SEP 2025

SW-1, 07 AUG 2025 to 04 SEP 2025